

State of the Indian Economy

March 8, 2010

Tracking and researching the Indian business cycle requires consistent access to seasonally adjusted monthly time-series. This report portrays the state of the economy using some such time-series. For more details, see <http://mayin.org/cycle.in>

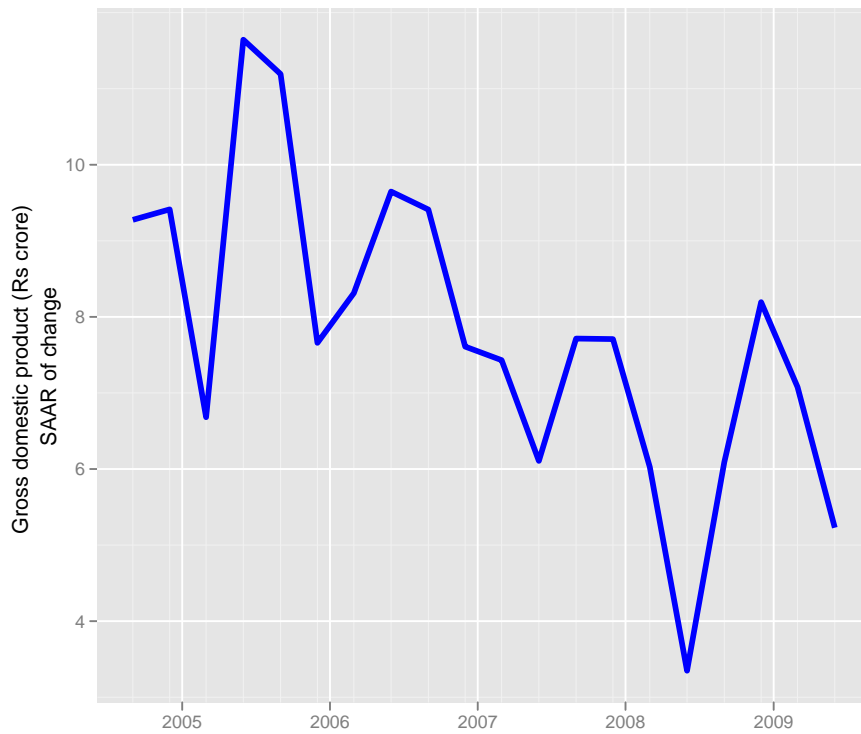
Notation:

“SA”	Seasonally adjusted.
“NSA”	Non-seasonally adjusted.
“YOY”	Year-on-year growth (in percent).
“SAAR”	Seasonally adjusted annualised rate, in percent, point-on-point.
“SAAR.3mma”	Three month moving average of the SAAR.

Contents

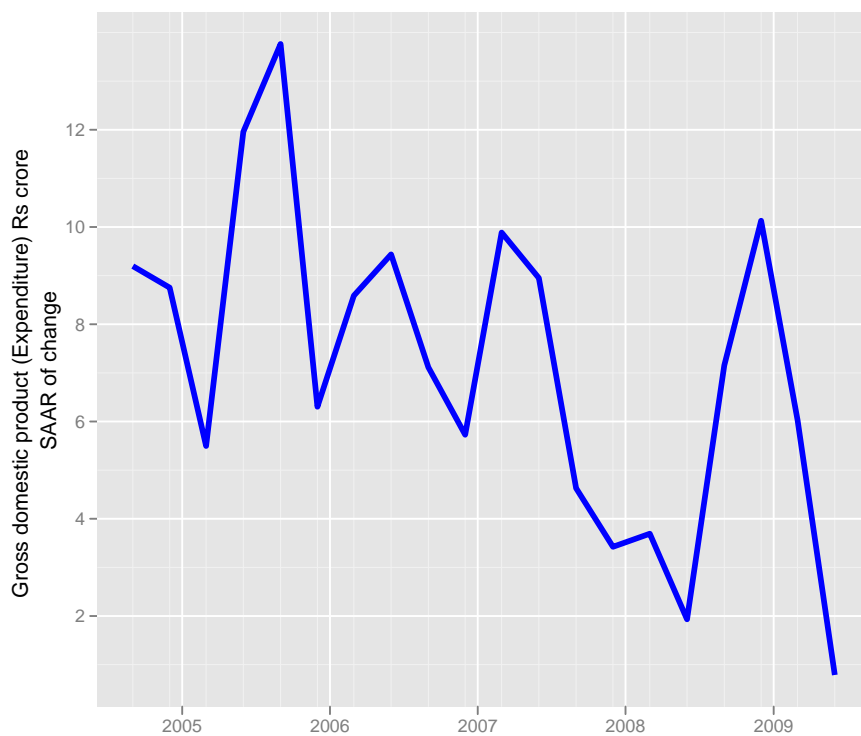
1	Gross domestic product	2
2	Gross domestic product (Expenditure)	3
3	Gross domestic product (Agriculture)	4
4	Index of industrial production	5
5	Index of industrial production (Manufacturing)	6
6	Index of industrial production (Capital goods)	7
7	Index of industrial production (Consumer goods)	8
8	Consumer Price Index (Industrial workers)	9
9	Wholesale price index	10
10	Wholesale price index (Food)	11
11	Wholesale price index (Fruits and vegetables)	12
12	Exports	13
13	Non oil exports	14
14	Imports	15
15	Non oil imports	16
16	Capital goods imports	17
17	Non food credit	18

1 Gross domestic product



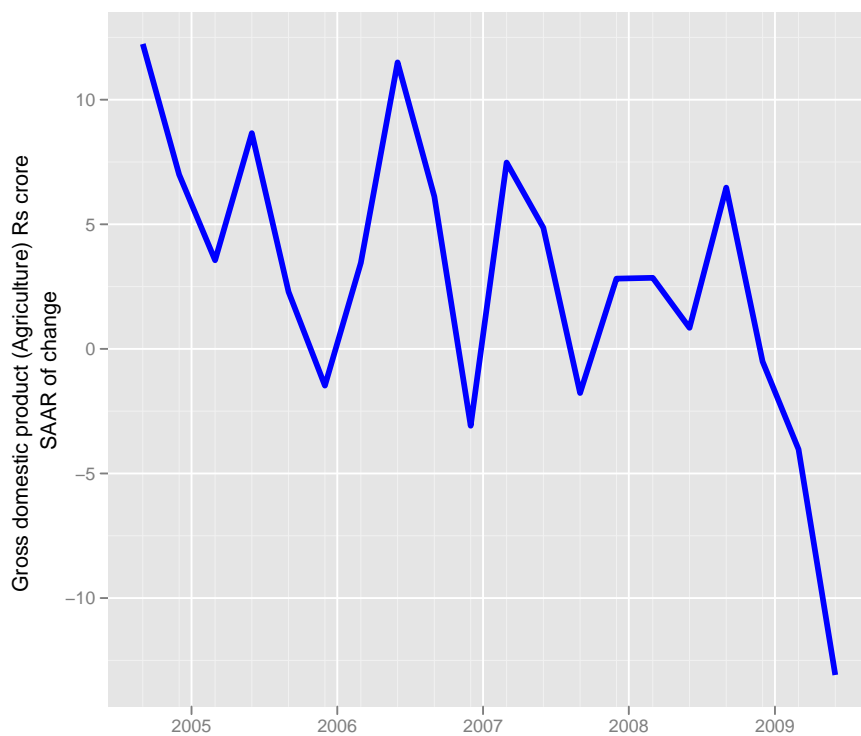
	nsa	sa	yoy	saar
2003 Q4	747047.51	709522.83	7.90	-2.10
2004 Q1	698078.69	727119.28	8.11	9.80
2004 Q2	687934.05	741682.77	6.92	7.93
2004 Q3	799118.46	754965.15	5.52	7.10
2004 Q4	813661.53	772677.09	8.92	9.28
2005 Q1	760141.17	791076.10	8.89	9.41
2005 Q2	747634.81	804400.14	8.68	6.68
2005 Q3	874308.48	828160.14	9.41	11.64
2005 Q4	896785.05	851660.23	10.22	11.19
2006 Q1	834496.68	868123.23	9.78	7.66
2006 Q2	826763.97	886352.64	10.58	8.31
2006 Q3	955373.96	907990.38	9.27	9.65
2006 Q4	986342.00	929606.64	9.99	9.41
2007 Q1	911042.00	947460.02	9.17	7.61
2007 Q2	903897.00	965225.88	9.33	7.43
2007 Q3	1028958.00	980074.48	7.70	6.11
2007 Q4	1049555.00	999161.06	6.41	7.71
2008 Q1	979837.00	1018602.20	7.55	7.71
2008 Q2	971983.00	1034063.85	7.53	6.03
2008 Q3	1093166.00	1042756.10	6.24	3.35
2008 Q4	1109988.00	1058749.74	5.76	6.09
2009 Q1	1040090.00	1080661.34	6.15	8.19
2009 Q2	1048985.00	1099951.58	7.92	7.08
2009 Q3	1158764.00	1114423.56	6.00	5.23

2 Gross domestic product (Expenditure)



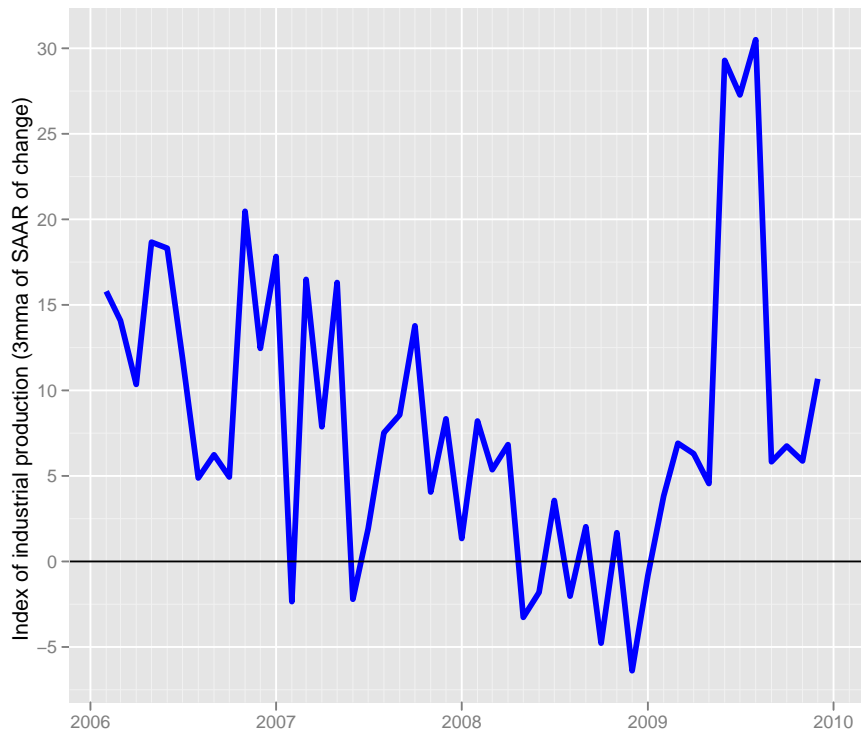
	nsa	sa	yoy	saar
2003 Q4	815806.31	772522.92	8.88	-3.37
2004 Q1	758416.22	793821.40	8.25	10.88
2004 Q2	760316.61	814323.42	8.55	10.20
2004 Q3	873446.93	829497.15	6.10	7.38
2004 Q4	899512.17	848787.77	10.26	9.20
2005 Q1	826052.24	867565.89	8.92	8.75
2005 Q2	823683.71	879568.87	8.33	5.50
2005 Q3	951623.68	906261.66	8.95	11.96
2005 Q4	996950.96	937988.85	10.83	13.76
2006 Q1	892786.14	952887.44	8.08	6.30
2006 Q2	916227.28	973567.60	11.24	8.59
2006 Q3	1043041.18	996808.79	9.61	9.44
2006 Q4	1094148.09	1014699.30	9.75	7.12
2007 Q1	974541.00	1029333.19	9.16	5.73
2007 Q2	998632.00	1055090.80	8.99	9.89
2007 Q3	1124683.00	1078965.22	7.83	8.95
2007 Q4	1160063.00	1091522.92	6.02	4.63
2008 Q1	1042528.00	1100904.24	6.98	3.42
2008 Q2	1057115.00	1111113.74	5.86	3.69
2008 Q3	1159298.00	1116493.36	3.08	1.93
2008 Q4	1206421.00	1136639.19	4.00	7.15
2009 Q1	1105641.00	1165790.36	6.05	10.13
2009 Q2	1129182.00	1183500.17	6.82	6.03
2009 Q3	1228201.00	1185831.43	5.94	0.79

3 Gross domestic product (Agriculture)



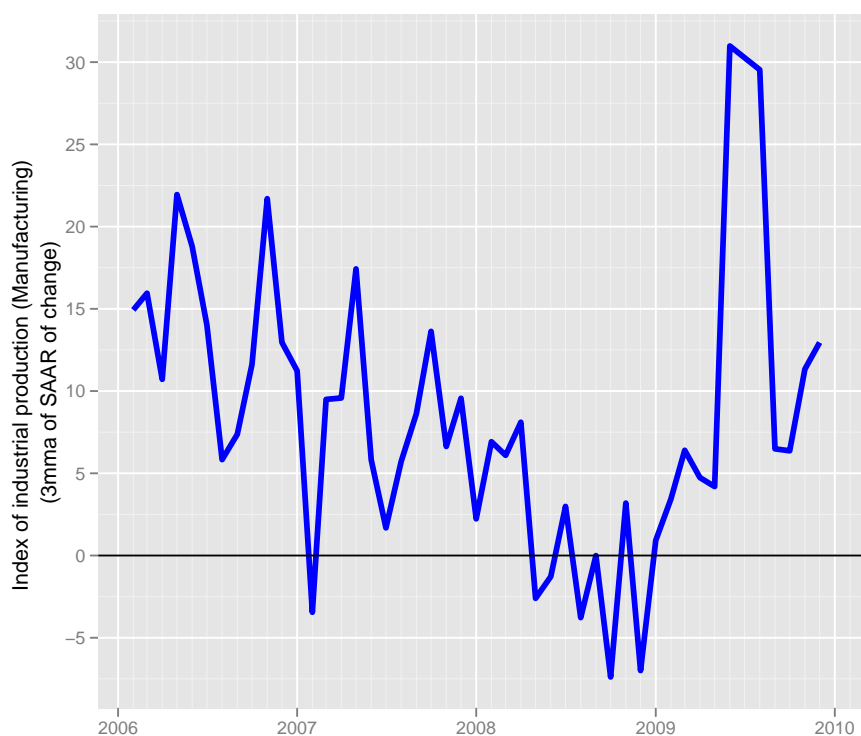
	nsa	sa	yoy	saar
2003 Q4	141490.78	138374.43	10.67	-17.56
2004 Q1	132433.05	137946.66	3.67	-1.24
2004 Q2	105327.78	139104.01	0.80	3.34
2004 Q3	172818.69	137207.33	-5.01	-5.49
2004 Q4	145351.94	141469.47	2.73	12.24
2005 Q1	137391.31	143965.05	3.74	6.99
2005 Q2	109971.76	145250.67	4.41	3.56
2005 Q3	187061.48	148429.20	8.24	8.66
2005 Q4	153975.66	149280.65	5.93	2.29
2006 Q1	141293.92	148731.16	2.84	-1.48
2006 Q2	113604.99	150020.80	3.30	3.45
2006 Q3	194677.89	154395.68	4.07	11.50
2006 Q4	162079.04	156774.68	5.26	6.12
2007 Q1	147309.00	155570.13	4.26	-3.09
2007 Q2	120267.00	158506.36	5.86	7.48
2007 Q3	207345.00	160444.57	6.51	4.86
2007 Q4	165393.00	159735.21	2.04	-1.77
2008 Q1	152051.00	160865.00	3.22	2.82
2008 Q2	123180.00	162015.81	2.42	2.85
2008 Q3	204450.00	162358.31	-1.40	0.84
2008 Q4	170781.00	165006.96	3.26	6.47
2009 Q1	155699.00	164797.39	2.40	-0.51
2009 Q2	124305.00	163144.76	0.91	-4.03
2009 Q3	198676.00	157893.34	-2.82	-13.09

4 Index of industrial production



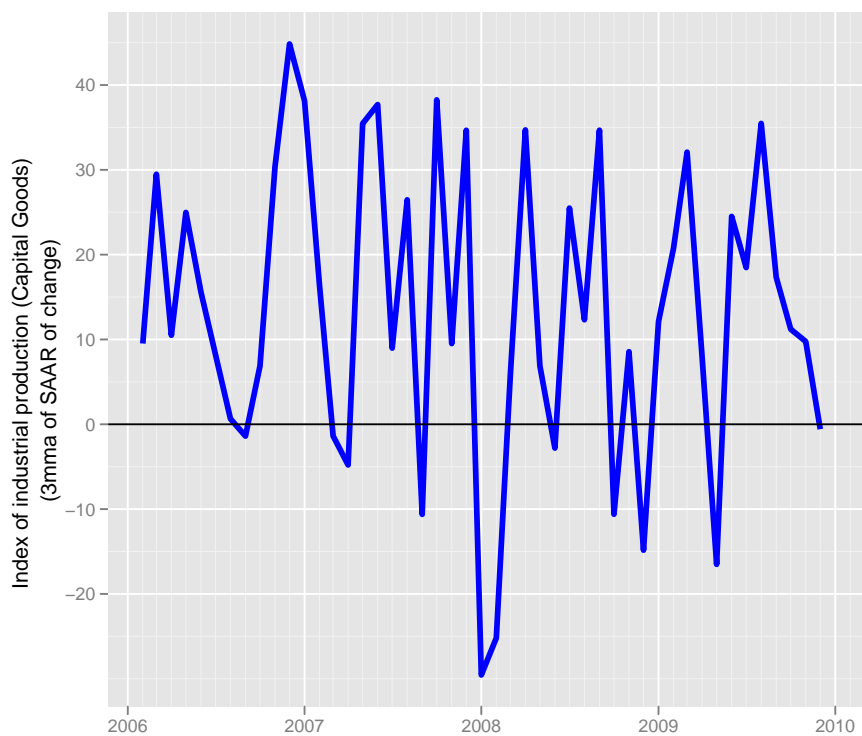
	nsa	sa	yoy	saar	saar.3mma
2008 Feb	276.20	276.36	9.52	22.30	8.21
2008 Mar	304.90	276.95	5.47	2.53	5.36
2008 Apr	266.30	275.94	6.22	-4.35	6.83
2008 May	274.60	274.11	4.37	-7.99	-3.27
2008 Jun	269.20	275.70	5.44	6.91	-1.81
2008 Jul	271.30	278.41	6.39	11.77	3.56
2008 Aug	264.70	272.73	1.69	-24.76	-2.03
2008 Sep	276.20	277.10	6.03	19.08	2.03
2008 Oct	262.90	275.11	0.11	-8.64	-4.78
2008 Nov	267.60	273.88	2.53	-5.39	1.68
2008 Dec	284.00	272.71	-0.25	-5.13	-6.39
2009 Jan	284.80	274.55	1.03	8.06	-0.82
2009 Feb	276.80	276.50	0.22	8.53	3.82
2009 Mar	305.90	277.46	0.33	4.14	6.91
2009 Apr	269.30	278.91	1.13	6.23	6.30
2009 May	280.30	279.67	2.08	3.29	4.56
2009 Jun	291.60	298.54	8.32	78.35	29.29
2009 Jul	290.80	298.59	7.19	0.18	27.27
2009 Aug	292.80	301.83	10.62	12.98	30.50
2009 Sep	302.00	302.92	9.34	4.33	5.83
2009 Oct	290.10	303.66	10.35	2.93	6.75
2009 Nov	299.20	306.30	11.81	10.36	5.88
2009 Dec	331.70	311.12	16.80	18.74	10.68
2010 Jan					

5 Index of industrial production (Manufacturing)



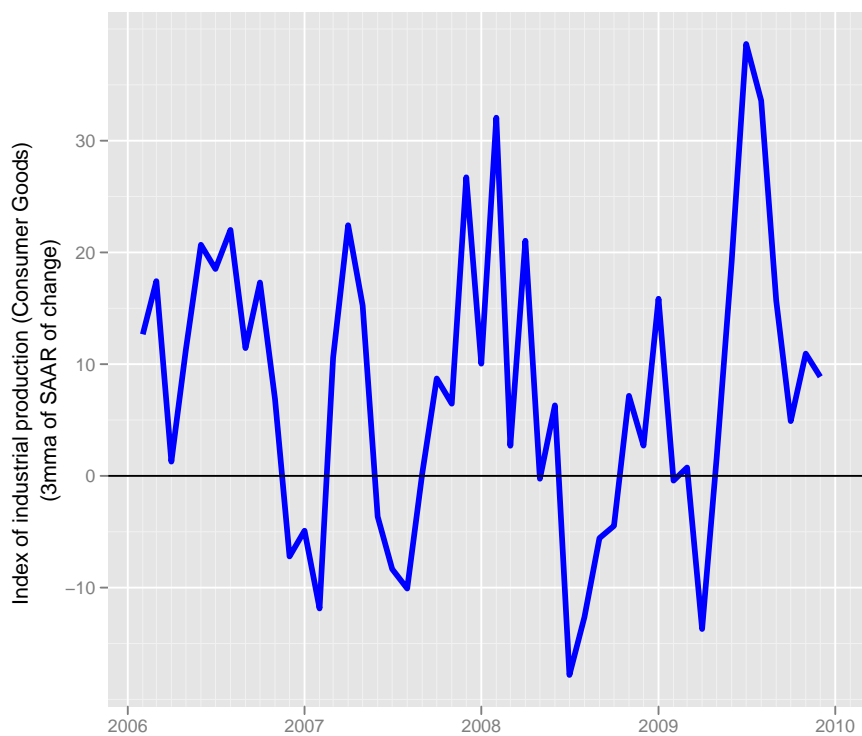
	nsa	sa	yoy	saar	saar.3mma
2008 Feb	296.80	295.91	9.64	20.44	6.92
2008 Mar	327.90	297.94	5.67	8.20	6.09
2008 Apr	285.00	296.87	6.70	-4.32	8.11
2008 May	293.10	293.99	4.49	-11.69	-2.60
2008 Jun	290.40	296.99	6.14	12.17	-1.28
2008 Jul	291.60	299.09	6.85	8.48	2.99
2008 Aug	284.00	291.23	1.72	-31.98	-3.78
2008 Sep	298.40	296.98	6.19	23.49	-0.00
2008 Oct	278.60	293.62	-0.57	-13.67	-7.39
2008 Nov	286.30	293.56	2.65	-0.25	3.19
2008 Dec	304.50	291.83	-0.59	-7.07	-7.00
2009 Jan	304.80	294.30	0.96	10.08	0.92
2009 Feb	297.40	296.10	0.20	7.33	3.45
2009 Mar	326.90	296.54	-0.30	1.79	6.40
2009 Apr	286.10	297.80	0.39	5.09	4.74
2009 May	298.50	299.22	1.84	5.69	4.19
2009 Jun	313.50	320.42	7.95	82.16	30.98
2009 Jul	313.10	321.21	7.37	2.95	30.27
2009 Aug	314.00	322.15	10.56	3.50	29.54
2009 Sep	327.20	325.66	9.65	13.02	6.49
2009 Oct	309.40	326.37	11.06	2.59	6.37
2009 Nov	323.20	331.41	12.89	18.40	11.33
2009 Dec	360.70	336.38	18.46	17.88	12.95
2010 Jan					

6 Index of industrial production (Capital goods)



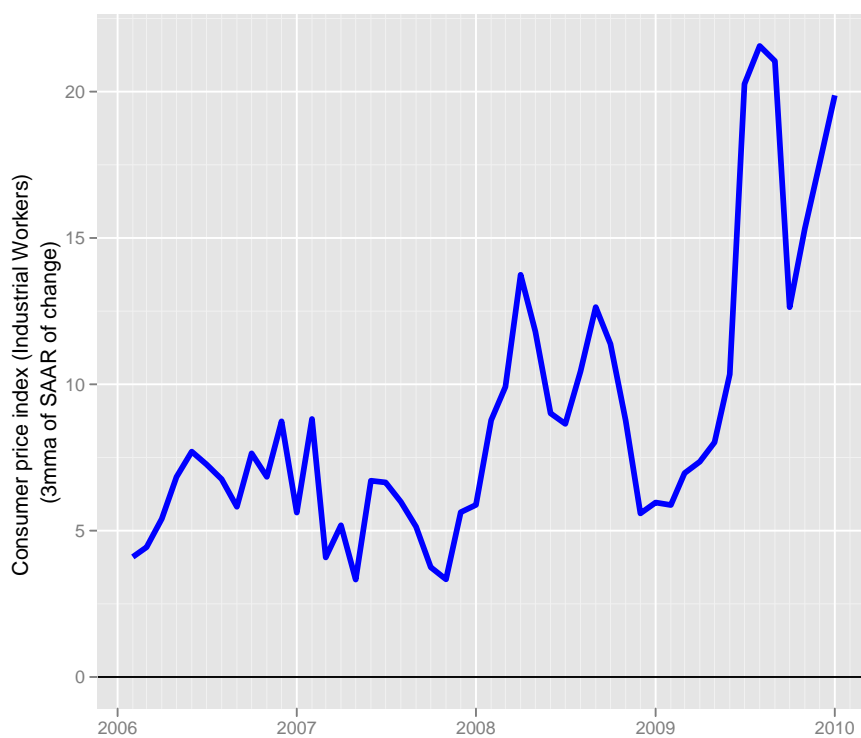
	nsa	sa	yoy	saar	saar.3mma
2008 Feb	356.80	374.02	10.70	71.05	-25.20
2008 Mar	543.40	390.96	20.30	53.18	5.85
2008 Apr	313.00	384.46	12.43	-20.12	34.70
2008 May	349.00	380.51	4.27	-12.41	6.88
2008 Jun	386.30	388.23	7.81	24.10	-2.81
2008 Jul	374.30	409.76	17.93	64.77	25.49
2008 Aug	372.00	392.42	0.92	-51.90	12.32
2008 Sep	470.20	423.38	20.84	91.14	34.67
2008 Oct	365.70	399.03	4.25	-71.07	-10.61
2008 Nov	394.00	400.90	0.48	5.61	8.56
2008 Dec	448.10	407.96	6.56	20.93	-14.84
2009 Jan	394.20	411.30	15.94	9.79	12.11
2009 Feb	398.90	422.25	11.80	31.53	20.75
2009 Mar	508.90	442.03	-6.35	54.93	32.08
2009 Apr	294.40	419.53	-5.94	-62.70	7.92
2009 May	336.50	405.17	-3.58	-41.79	-16.52
2009 Jun	438.00	469.96	13.38	178.01	24.51
2009 Jul	380.80	439.36	1.74	-80.79	18.48
2009 Aug	406.40	442.74	9.25	9.19	35.47
2009 Sep	533.60	490.79	13.48	123.63	17.34
2009 Oct	405.90	451.85	10.99	-99.20	11.21
2009 Nov	440.40	453.68	11.78	4.86	9.76
2009 Dec	621.80	490.08	38.76	92.61	-0.58
2010 Jan					

7 Index of industrial production (Consumer goods)



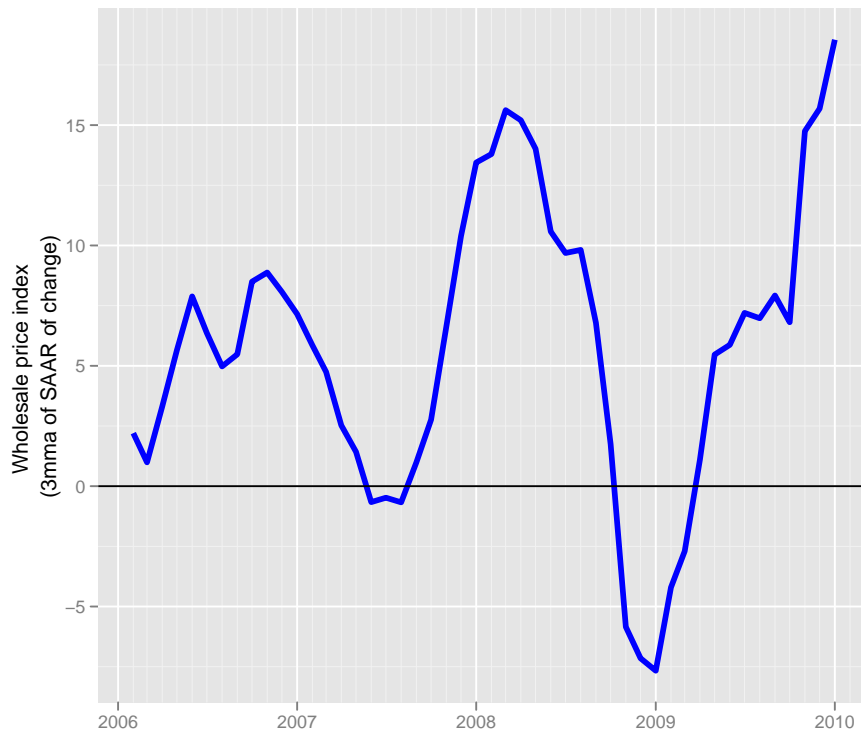
	nsa	sa	yoy	saar	saar.3mma
2008 Feb	327.60	311.19	11.66	38.84	32.06
2008 Mar	324.00	304.31	0.93	-26.81	2.70
2008 Apr	315.60	317.56	8.49	51.12	21.05
2008 May	310.30	310.99	7.44	-25.07	-0.26
2008 Jun	293.20	309.15	9.85	-7.11	6.31
2008 Jul	290.80	303.72	5.94	-21.28	-17.82
2008 Aug	283.90	301.32	6.41	-9.53	-12.64
2008 Sep	293.70	304.88	7.43	14.10	-5.57
2008 Oct	278.10	300.34	-0.89	-17.99	-4.48
2008 Nov	299.20	306.76	9.40	25.39	7.17
2008 Dec	326.10	306.95	1.65	0.73	2.71
2009 Jan	347.20	312.49	3.58	21.45	15.86
2009 Feb	323.30	306.44	-1.31	-23.45	-0.42
2009 Mar	328.10	307.52	1.27	4.24	0.75
2009 Apr	301.00	301.96	-4.63	-21.92	-13.71
2009 May	306.90	307.67	-1.10	22.47	1.60
2009 Jun	306.20	322.62	4.43	56.95	19.17
2009 Jul	318.90	332.60	9.66	36.55	38.66
2009 Aug	314.80	334.61	10.88	7.24	33.58
2009 Sep	322.30	335.54	9.74	3.31	15.70
2009 Oct	311.20	336.70	11.90	4.15	4.90
2009 Nov	334.90	343.89	11.93	25.37	10.94
2009 Dec	365.10	343.06	11.96	-2.91	8.87
2010 Jan					

8 Consumer Price Index (Industrial workers)



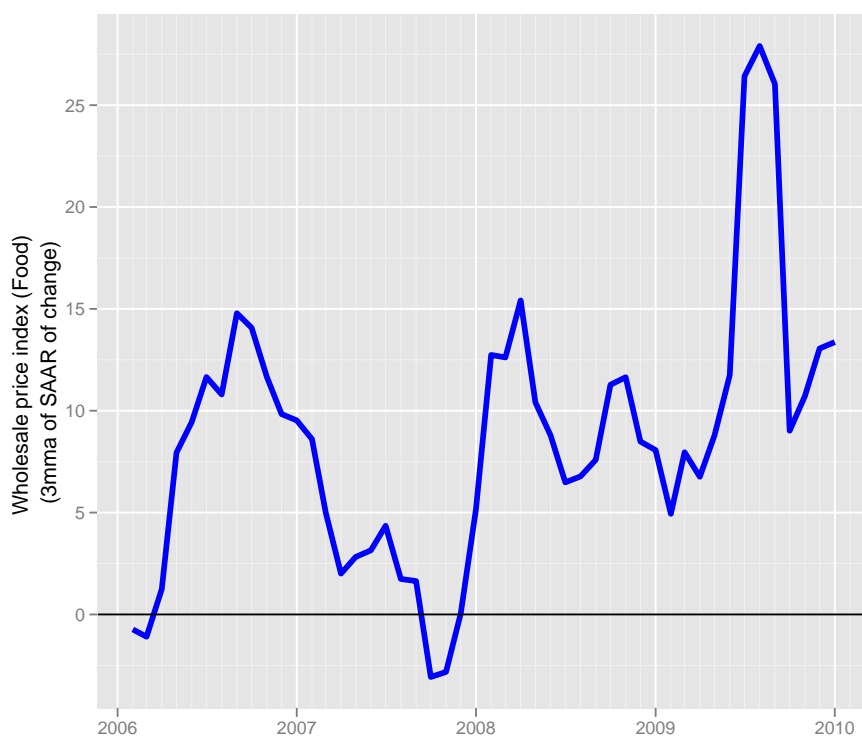
	nsa	sa	yoy	saar	saar.3mma
2008 Feb	135.00	135.90	5.47	13.37	8.77
2008 Mar	137.00	137.48	7.87	13.91	9.91
2008 Apr	138.00	139.09	7.81	13.94	13.74
2008 May	139.00	139.97	7.75	7.55	11.80
2008 Jun	140.00	140.61	7.69	5.54	9.01
2008 Jul	143.00	142.13	8.33	12.86	8.65
2008 Aug	145.00	143.67	9.02	12.93	10.44
2008 Sep	146.00	145.13	9.77	12.12	12.64
2008 Oct	148.00	146.23	10.45	9.08	11.38
2008 Nov	148.00	146.85	10.45	5.08	8.76
2008 Dec	147.00	147.17	9.70	2.61	5.59
2009 Jan	148.00	148.42	10.45	10.19	5.96
2009 Feb	148.00	149.02	9.63	4.83	5.88
2009 Mar	148.00	149.75	8.03	5.88	6.97
2009 Apr	150.00	151.18	8.70	11.37	7.36
2009 May	151.00	152.04	8.63	6.81	8.02
2009 Jun	153.00	153.68	9.29	12.85	10.34
2009 Jul	160.00	159.03	11.89	41.13	20.26
2009 Aug	162.00	160.46	11.72	10.70	21.56
2009 Sep	163.00	161.98	11.64	11.31	21.05
2009 Oct	165.00	164.14	11.49	15.89	12.63
2009 Nov	168.00	166.73	13.51	18.77	15.32
2009 Dec	169.00	169.24	14.97	17.96	17.54
2010 Jan	172.00	172.50	16.22	22.89	19.87

9 Wholesale price index



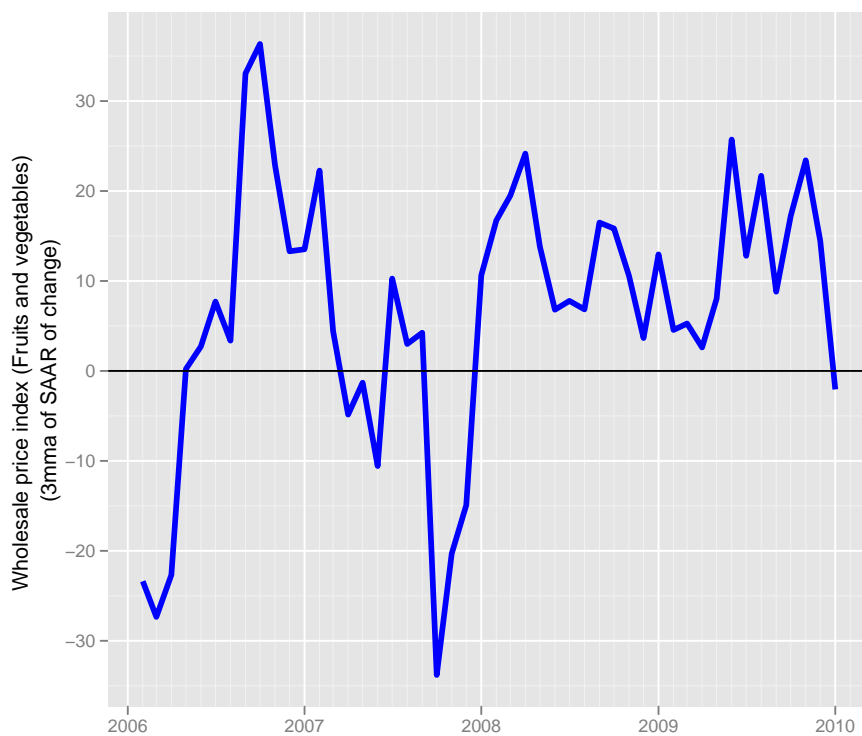
	nsa	sa	yoy	saar	saar.3mma
2008 Feb	219.90	222.95	5.27	12.23	13.80
2008 Mar	225.50	226.54	7.48	19.17	15.62
2008 Apr	228.50	229.24	8.04	14.20	15.20
2008 May	231.10	230.90	8.86	8.67	14.02
2008 Jun	237.40	232.61	11.82	8.86	10.58
2008 Jul	240.00	234.86	12.36	11.53	9.69
2008 Aug	241.20	236.63	12.82	9.06	9.82
2008 Sep	241.50	236.59	12.27	-0.22	6.79
2008 Oct	239.00	235.88	11.06	-3.60	1.75
2008 Nov	234.20	233.20	8.48	-13.72	-5.85
2008 Dec	229.80	232.40	6.19	-4.13	-7.15
2009 Jan	228.90	231.41	4.90	-5.15	-7.67
2009 Feb	227.60	230.76	3.50	-3.34	-4.21
2009 Mar	228.20	230.84	1.20	0.38	-2.70
2009 Apr	231.40	232.04	1.27	6.25	1.10
2009 May	234.30	233.94	1.38	9.77	5.47
2009 Jun	235.00	234.25	-1.01	1.60	5.87
2009 Jul	238.70	236.26	-0.54	10.23	7.20
2009 Aug	240.80	238.05	-0.17	9.10	6.98
2009 Sep	242.60	238.94	0.46	4.44	7.92
2009 Oct	242.50	240.31	1.46	6.90	6.81
2009 Nov	247.20	247.00	5.55	32.92	14.75
2009 Dec	246.50	248.49	7.27	7.24	15.69
2010 Jan	248.50	251.72	8.56	15.49	18.55

10 Wholesale price index (Food)



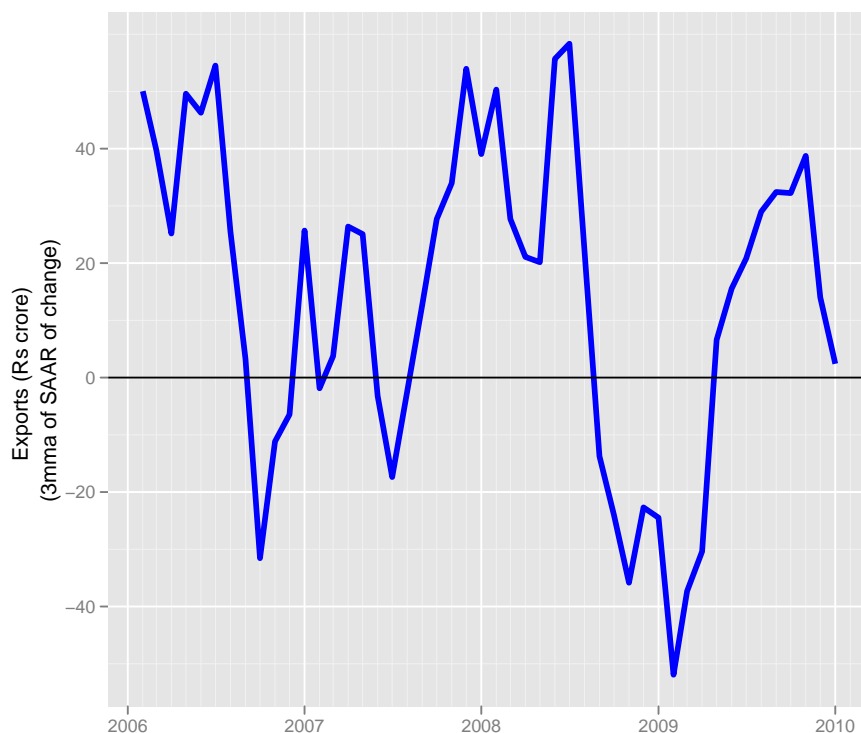
	nsa	sa	yoy	saar	saar.3mma
2008 Feb	222.10	226.86	3.35	21.80	12.74
2008 Mar	226.70	228.90	5.93	10.76	12.62
2008 Apr	230.40	231.53	5.54	13.68	15.42
2008 May	233.20	232.84	5.71	6.80	10.42
2008 Jun	232.30	233.99	5.93	5.89	8.79
2008 Jul	236.70	235.31	6.05	6.76	6.48
2008 Aug	237.90	236.82	6.87	7.68	6.78
2008 Sep	242.90	238.47	7.72	8.33	7.59
2008 Oct	245.40	242.04	9.90	17.82	11.28
2008 Nov	246.00	243.82	10.31	8.78	11.64
2008 Dec	242.00	243.58	9.95	-1.15	8.49
2009 Jan	243.90	246.97	11.02	16.57	8.07
2009 Feb	242.80	246.84	9.32	-0.61	4.94
2009 Mar	243.80	248.48	7.54	7.93	7.96
2009 Apr	250.20	251.18	8.59	12.95	6.76
2009 May	252.90	252.33	8.45	5.51	8.80
2009 Jun	257.60	255.89	10.89	16.80	11.75
2009 Jul	270.10	268.33	14.11	56.97	26.42
2009 Aug	271.40	270.56	14.08	9.96	27.91
2009 Sep	277.40	273.10	14.20	11.20	26.04
2009 Oct	277.40	274.45	13.04	5.90	9.02
2009 Nov	291.90	277.91	18.66	15.04	10.71
2009 Dec	288.40	282.16	19.17	18.22	13.05
2010 Jan	286.40	283.78	17.43	6.85	13.37

11 Wholesale price index (Fruits and vegetables)



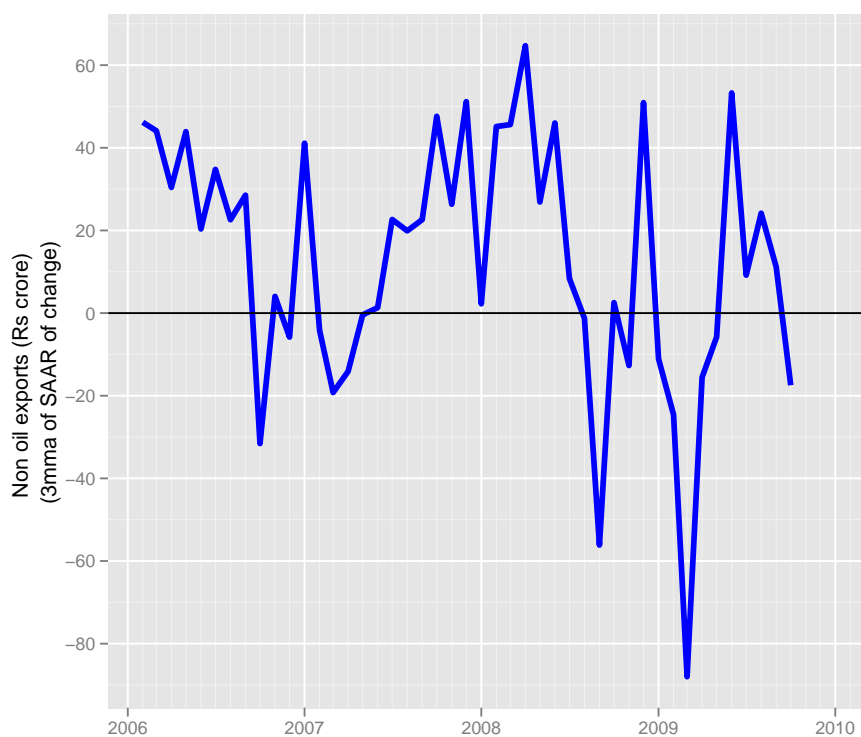
	nsa	sa	yoy	saar	saar.3mma
2008 Feb	220.30	240.15	-0.32	47.83	16.72
2008 Mar	236.10	240.89	6.21	3.69	19.50
2008 Apr	245.40	245.13	2.98	20.96	24.16
2008 May	252.70	248.59	3.27	16.80	13.81
2008 Jun	241.40	245.02	3.65	-17.35	6.80
2008 Jul	252.00	249.95	2.52	23.92	7.79
2008 Aug	255.10	252.88	4.72	13.96	6.84
2008 Sep	276.00	255.33	6.85	11.60	16.49
2008 Oct	277.00	260.04	14.32	21.95	15.84
2008 Nov	278.40	259.65	18.87	-1.82	10.58
2008 Dec	249.30	257.68	12.25	-9.16	3.66
2009 Jan	256.20	268.61	17.31	49.85	12.96
2009 Feb	241.30	262.62	9.53	-27.03	4.55
2009 Mar	240.90	261.09	2.03	-7.01	5.27
2009 Apr	271.10	270.36	10.47	41.87	2.61
2009 May	272.20	267.95	7.72	-10.76	8.03
2009 Jun	274.00	278.43	13.50	46.04	25.72
2009 Jul	294.70	279.15	16.94	3.11	12.80
2009 Aug	285.70	282.88	12.00	15.93	21.69
2009 Sep	305.80	284.63	10.80	7.39	8.81
2009 Oct	294.90	291.44	6.46	28.38	17.23
2009 Nov	318.50	299.94	14.40	34.48	23.42
2009 Dec	305.30	295.10	22.46	-19.52	14.45
2010 Jan	277.50	289.95	8.31	-21.12	-2.05

12 Exports



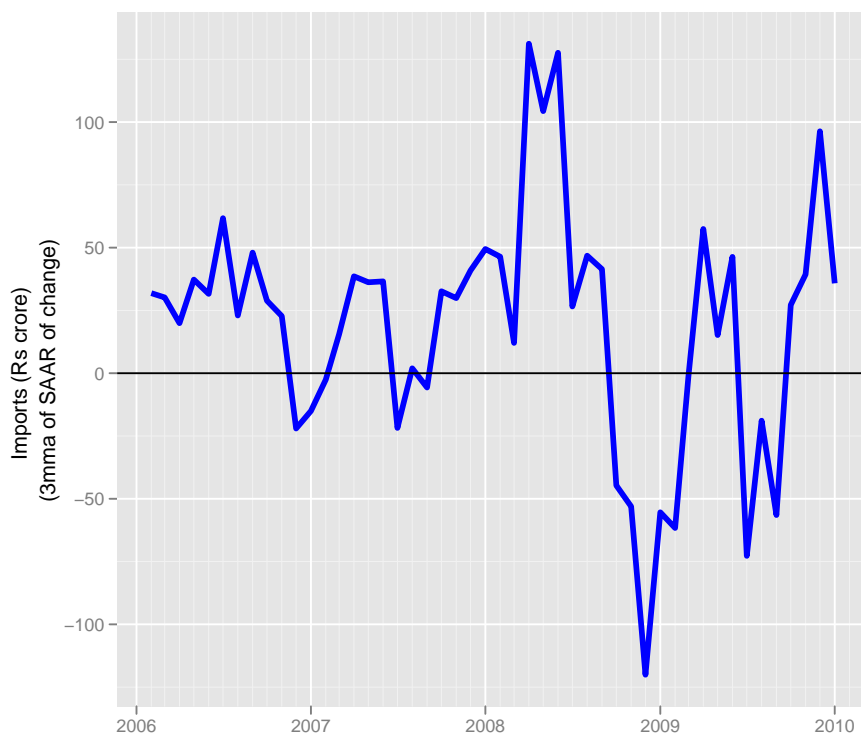
	nsa	sa	yoy	saar	saar.3mma
2008 Feb	60060.72	62229.16	29.21	84.71	50.32
2008 Mar	69630.47	60626.62	22.96	-31.31	27.72
2008 Apr	73882.77	61126.87	60.04	9.86	21.09
2008 May	78717.44	65445.37	58.09	81.92	20.16
2008 Jun	82133.09	69683.55	69.70	75.30	55.69
2008 Jul	81522.53	70724.94	61.97	17.80	58.34
2008 Aug	76253.90	69195.86	48.09	-26.23	22.29
2008 Sep	71940.63	67331.67	43.18	-32.77	-13.73
2008 Oct	68754.34	66602.17	19.28	-13.07	-24.02
2008 Nov	54699.00	63265.00	8.63	-61.69	-35.84
2008 Dec	65015.00	63620.04	28.54	6.72	-22.68
2009 Jan	62844.00	62648.76	8.45	-18.46	-24.48
2009 Feb	53855.12	55564.02	-10.33	-144.01	-51.92
2009 Mar	66093.07	57953.28	-5.08	50.52	-37.32
2009 Apr	58822.13	58065.26	-20.38	2.32	-30.39
2009 May	55415.83	56486.71	-29.60	-33.07	6.59
2009 Jun	61969.02	60249.46	-24.55	77.39	15.54
2009 Jul	64329.51	61166.69	-21.09	18.13	20.81
2009 Aug	62506.46	60731.43	-18.03	-8.57	28.98
2009 Sep	66558.87	65337.12	-7.48	87.72	32.43
2009 Oct	66188.44	66300.33	-3.73	17.56	32.24
2009 Nov	61462.00	66907.29	12.36	10.94	38.74
2009 Dec	68107.00	67668.36	4.76	13.57	14.02
2010 Jan	65920.00	66701.40	4.89	-17.27	2.41

13 Non oil exports



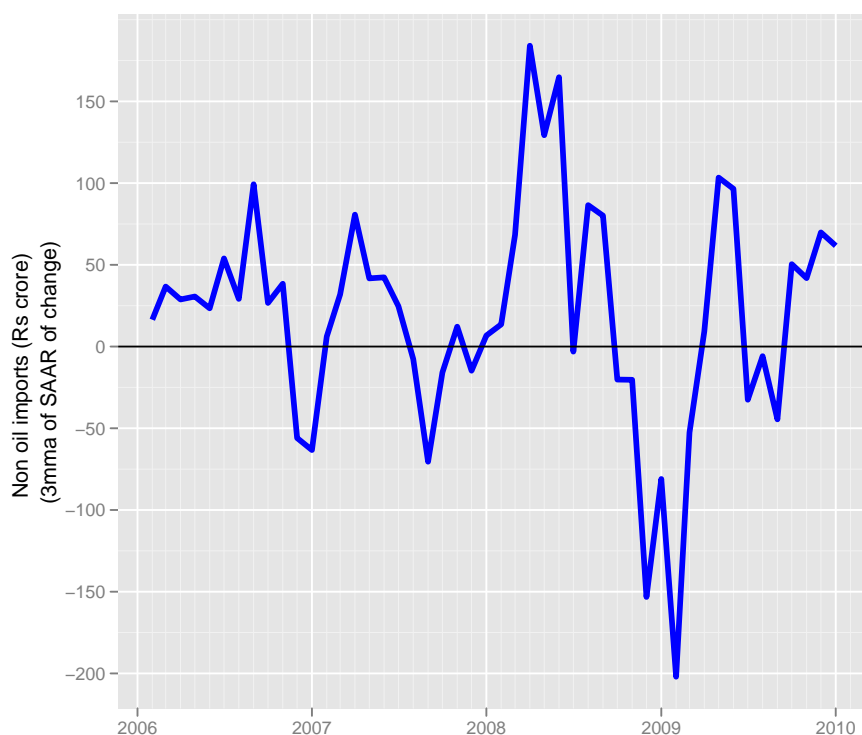
	nsa	sa	yoy	saar	saar.3mma
2008 Feb	50607.84	52268.25	23.92	103.36	45.14
2008 Mar	66007.19	53620.66	33.58	30.65	45.61
2008 Apr	53166.86	56374.58	42.28	60.10	64.71
2008 May	54223.13	55901.92	33.22	-10.10	26.88
2008 Jun	60839.08	60156.38	52.87	88.02	46.01
2008 Jul	65571.24	57565.89	58.28	-52.82	8.36
2008 Aug	55344.69	55727.20	27.37	-38.95	-1.25
2008 Sep	51603.53	52278.77	23.55	-76.65	-56.14
2008 Oct	58419.68	57930.39	21.56	123.18	2.52
2008 Nov	48470.52	53987.23	15.50	-84.59	-12.69
2008 Dec	58770.25	59376.20	41.36	114.18	50.92
2009 Jan	56816.79	56354.47	17.09	-62.68	-11.03
2009 Feb	48972.58	50769.96	-3.23	-125.23	-24.58
2009 Mar	58292.13	47650.41	-11.69	-76.10	-88.00
2009 Apr	51232.76	54206.99	-3.64	154.70	-15.54
2009 May	48323.78	50040.53	-10.88	-95.97	-5.79
2009 Jun	55455.82	54438.71	-8.85	101.09	53.27
2009 Jul	55703.56	55465.13	-15.05	22.41	9.18
2009 Aug	52619.15	53158.75	-4.92	-50.97	24.18
2009 Sep	55055.21	55978.12	6.69	62.01	11.15
2009 Oct	53583.42	53096.74	-8.28	-63.41	-17.46
2009 Nov					
2009 Dec					
2010 Jan					

14 Imports



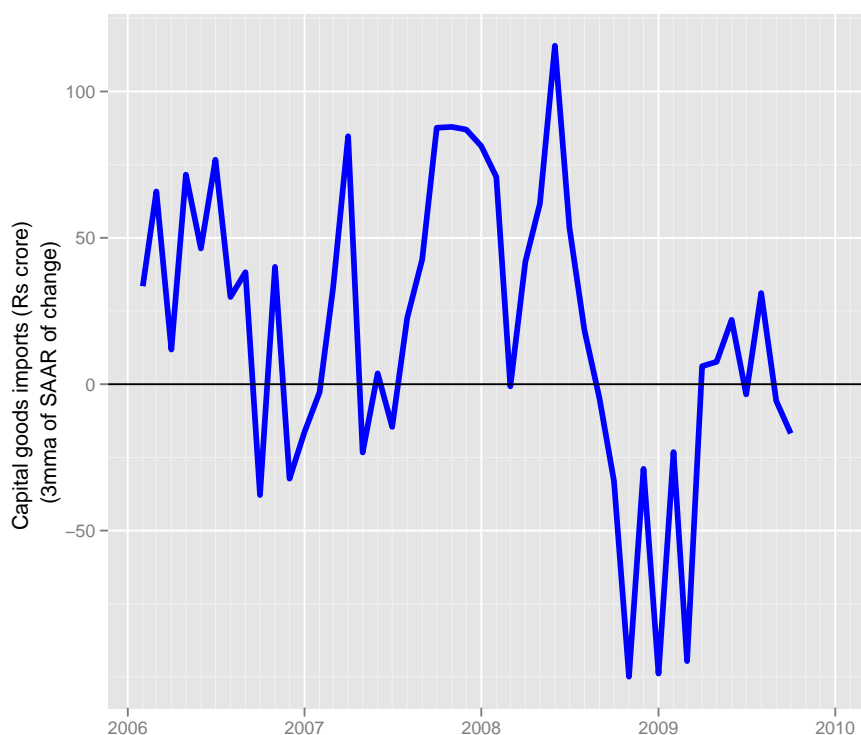
	nsa	sa	yoy	saar	saar.3mma
2008 Feb	82382.82	92636.84	32.24	28.45	46.39
2008 Mar	91684.01	88659.57	21.61	-52.66	12.06
2008 Apr	121335.37	125585.42	62.24	417.82	131.20
2008 May	124031.23	120250.97	57.79	-52.09	104.36
2008 Jun	123967.09	121973.68	56.60	17.07	127.60
2008 Jul	135477.14	134213.29	83.58	114.75	26.58
2008 Aug	143940.11	135178.82	78.32	8.60	46.81
2008 Sep	141865.32	135283.30	106.92	0.93	41.43
2008 Oct	125868.25	120024.59	51.20	-143.61	-44.69
2008 Nov	115091.00	118386.08	43.67	-16.49	-53.06
2008 Dec	94625.00	100205.62	29.62	-200.07	-120.06
2009 Jan	89015.00	104505.19	0.34	50.42	-55.38
2009 Feb	64602.63	101479.97	-21.58	-35.25	-61.64
2009 Mar	81080.93	99959.45	-11.56	-18.12	-0.98
2009 Apr	93855.35	120640.01	-22.65	225.66	57.43
2009 May	96821.62	105408.95	-21.94	-161.96	15.19
2009 Jun	105888.13	112232.72	-14.58	75.27	46.32
2009 Jul	96346.97	100580.67	-28.88	-131.54	-72.74
2009 Aug	103452.76	100545.12	-28.13	-0.42	-18.90
2009 Sep	99045.72	97454.45	-30.18	-37.47	-56.48
2009 Oct	111028.89	107652.80	-11.79	119.43	27.18
2009 Nov	106584.00	110939.11	-7.39	36.08	39.35
2009 Dec	115420.00	123991.38	21.98	133.48	96.33
2010 Jan	113545.00	117730.64	27.56	-62.18	35.80

15 Non oil imports



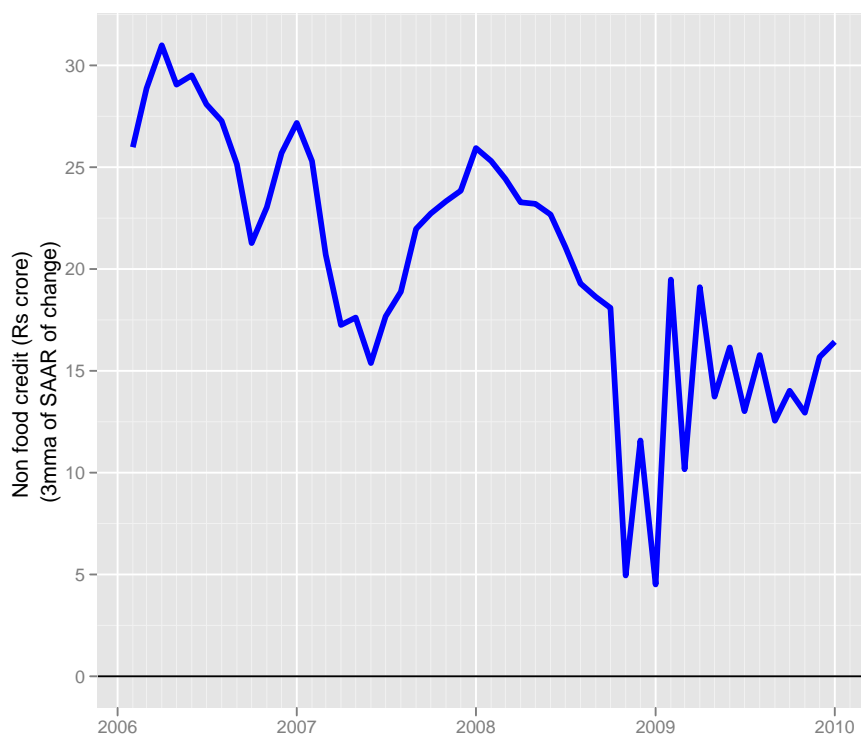
	nsa	sa	yoy	saar	saar.3mma
2008 Feb	51742.70	55797.58	21.89	38.12	13.57
2008 Mar	55122.74	54229.52	2.31	-34.21	68.36
2008 Apr	85593.29	85637.93	65.76	548.28	184.07
2008 May	79820.16	77091.41	43.27	-126.16	129.30
2008 Jun	80634.80	81873.87	46.22	72.23	164.78
2008 Jul	81178.42	84976.96	58.66	44.64	-3.10
2008 Aug	94473.59	95706.89	70.53	142.69	86.52
2008 Sep	98382.12	100024.27	117.60	52.95	80.09
2008 Oct	90422.77	80791.05	57.35	-256.26	-20.21
2008 Nov	85916.40	90962.32	57.52	142.29	-20.34
2008 Dec	72362.19	68193.65	56.96	-345.71	-153.22
2009 Jan	66934.07	65975.73	21.20	-39.68	-81.03
2009 Feb	48410.15	54894.28	-6.44	-220.65	-202.01
2009 Mar	59707.69	59788.32	8.32	102.48	-52.62
2009 Apr	70142.06	67514.78	-18.05	145.84	9.22
2009 May	71085.25	71081.55	-10.94	61.78	103.37
2009 Jun	74792.26	76100.48	-7.25	81.87	96.50
2009 Jul	62019.14	62239.25	-23.60	-241.28	-32.54
2009 Aug	70003.74	70043.26	-25.90	141.75	-5.89
2009 Sep	67373.84	68078.20	-31.52	-34.15	-44.56
2009 Oct	74948.27	70597.05	-17.11	43.60	50.40
2009 Nov	76830.43	77771.34	-10.58	116.14	41.86
2009 Dec	84942.63	81062.65	17.39	49.74	69.83
2010 Jan	81129.41	82366.07	21.21	19.14	61.67

16 Capital goods imports



	nsa	sa	yoy	saar	saar.3mma
2008 Feb	15302.78	16080.12	60.07	-16.76	70.82
2008 Mar	15909.44	14551.52	30.25	-119.87	-0.74
2008 Apr	18660.50	18104.38	63.18	262.15	41.84
2008 May	18397.93	18759.77	83.90	42.67	61.65
2008 Jun	18429.25	19429.40	88.43	42.09	115.64
2008 Jul	19349.13	20695.84	99.19	75.77	53.51
2008 Aug	18633.43	19645.04	64.33	-62.53	18.44
2008 Sep	17792.42	19197.08	78.97	-27.68	-4.81
2008 Oct	20731.64	19052.85	51.12	-9.05	-33.09
2008 Nov	14779.24	15302.10	-1.92	-263.07	-99.93
2008 Dec	19982.90	17858.26	83.58	185.37	-28.92
2009 Jan	15319.09	14880.35	-8.72	-218.91	-98.87
2009 Feb	12499.65	14440.38	-18.32	-36.02	-23.18
2009 Mar	15538.18	14097.12	-2.33	-28.87	-94.60
2009 Apr	16349.96	15110.79	-12.38	83.33	6.15
2009 May	16321.90	14719.27	-11.28	-31.50	7.65
2009 Jun	16036.26	14894.27	-12.98	14.18	22.00
2009 Jul	12080.67	14979.94	-37.56	6.88	-3.48
2009 Aug	14920.61	15911.06	-19.93	72.36	31.14
2009 Sep	13455.25	14684.72	-24.38	-96.25	-5.67
2009 Oct	14330.15	14362.90	-30.88	-26.59	-16.83
2009 Nov					
2009 Dec					
2010 Jan					

17 Non food credit



	nsa	sa	yoy	saar	saar.3mma
2008 Feb	2210449.00	2198857.35	24.54	25.06	25.30
2008 Mar	2317515.00	2240098.52	22.97	22.30	24.43
2008 Apr	2284110.00	2282447.79	24.27	22.47	23.28
2008 May	2323200.00	2330170.20	26.34	24.83	23.20
2008 Jun	2363388.00	2370753.20	26.24	20.72	22.68
2008 Jul	2355456.00	2406003.80	25.73	17.71	21.09
2008 Aug	2416411.00	2445293.29	25.60	19.44	19.29
2008 Sep	2505851.00	2483802.57	25.26	18.75	18.63
2008 Oct	2597187.00	2517322.00	30.46	16.09	18.09
2008 Nov	2592149.00	2475746.72	25.95	-19.98	4.95
2008 Dec	2594118.00	2556762.18	23.04	38.64	11.58
2009 Jan	2592259.00	2545862.06	20.79	-5.13	4.51
2009 Feb	2619498.00	2599305.16	18.51	24.93	19.48
2009 Mar	2729338.00	2622575.52	17.77	10.70	10.17
2009 Apr	2695514.00	2670431.32	18.01	21.70	19.11
2009 May	2687198.00	2690092.89	15.67	8.80	13.73
2009 Jun	2721160.00	2730629.90	15.14	17.95	16.15
2009 Jul	2756333.00	2758771.92	17.02	12.30	13.02
2009 Aug	2757630.00	2798306.95	14.12	17.07	15.78
2009 Sep	2832252.00	2817658.20	13.03	8.27	12.55
2009 Oct	2847287.00	2857202.55	9.63	16.72	14.02
2009 Nov	2866786.00	2890336.81	10.59	13.84	12.94
2009 Dec	2923954.00	2930306.29	12.71	16.48	15.68
2010 Jan	2985164.00	2976992.13	15.16	18.97	16.43

References

Rudrani Bhattacharya, Ila Patnaik, and Ajay Shah. Early warnings of inflation in India. *National Institute of Public Finance and Policy, Working Paper No.58*, 2008.

Statistical Research Division Time Series Staff. X-12-ARIMA reference manual. Technical report, U.S Census Bureau, 2007.