

# State of the Indian Economy

July 1, 2013

Tracking and researching the Indian business cycle requires consistent access to seasonally adjusted monthly time-series. This report portrays the state of the economy using some such time-series. For more details, see <http://mayin.org/cycle.in>.

Notation:

---

“SA”	Seasonally adjusted.
“NSA”	Non-seasonally adjusted.
“YOY”	Year-on-year growth (in percent).
“SAAR”	Seasonally adjusted annualised rate, in percent, point-on-point.
“SAAR.3mma”	Three month moving average of the SAAR.

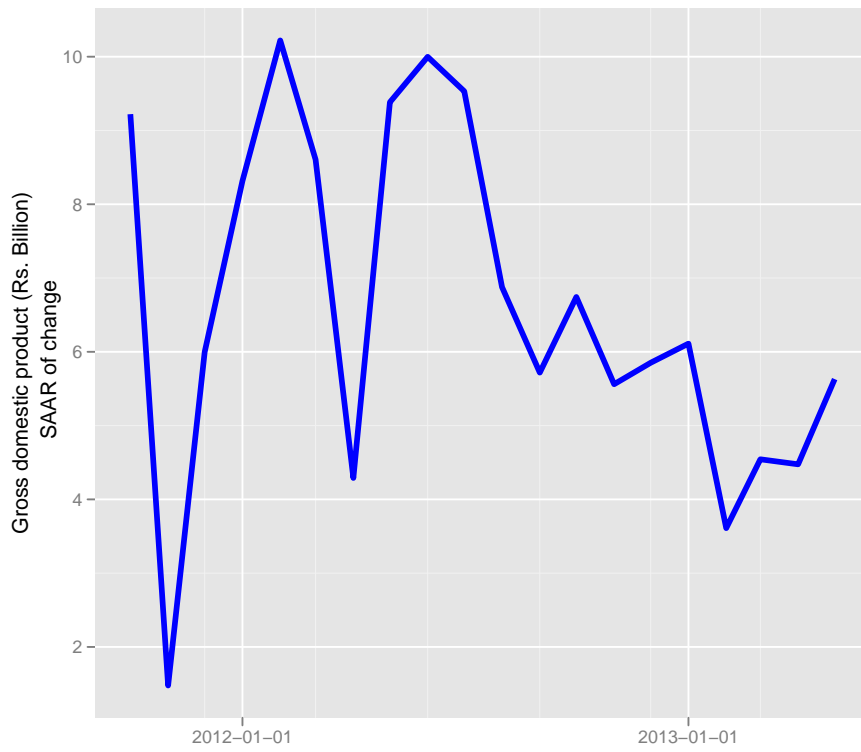
---

## Contents

<b>1</b>	<b>Gross domestic product</b>	<b>3</b>
<b>2</b>	<b>Gross domestic product (Expenditure)</b>	<b>4</b>
<b>3</b>	<b>Gross domestic product (Agriculture)</b>	<b>5</b>
<b>4</b>	<b>Index of industrial production</b>	<b>6</b>
<b>5</b>	<b>Index of industrial production (Manufacturing)</b>	<b>7</b>
<b>6</b>	<b>Index of industrial production (Capital goods)</b>	<b>8</b>
<b>7</b>	<b>Index of industrial production (Consumer goods)</b>	<b>9</b>
<b>8</b>	<b>Cement production</b>	<b>10</b>
<b>9</b>	<b>Steel Production</b>	<b>11</b>
<b>10</b>	<b>Car production</b>	<b>12</b>
<b>11</b>	<b>Car sales</b>	<b>13</b>
<b>12</b>	<b>Consumer Price Index (Industrial workers)</b>	<b>14</b>
<b>13</b>	<b>Wholesale price index</b>	<b>15</b>
<b>14</b>	<b>Wholesale price index (Food articles)</b>	<b>16</b>
<b>15</b>	<b>Wholesale price index (Fruits and vegetables)</b>	<b>17</b>
<b>16</b>	<b>Wholesale price index (Manufacturing)</b>	<b>18</b>
<b>17</b>	<b>Wholesale price index (Non food)</b>	<b>19</b>

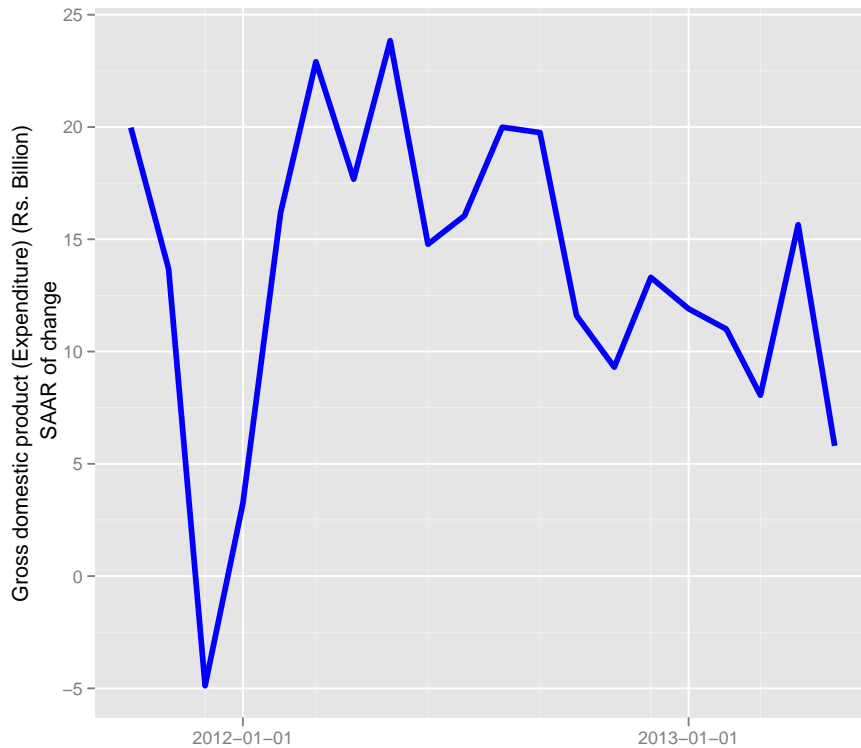
18 Wholesale price index (Non food, non fuel)	20
19 Exports	21
20 Non oil exports	22
21 Imports	23
22 Non oil imports	24
23 Capital goods imports	25
24 Railway goods traffic	26
25 Port traffic	27
26 M0 (Reserve money)	28
27 Non food credit	29
28 Bank credit to the commercial sector	30

# 1 Gross domestic product



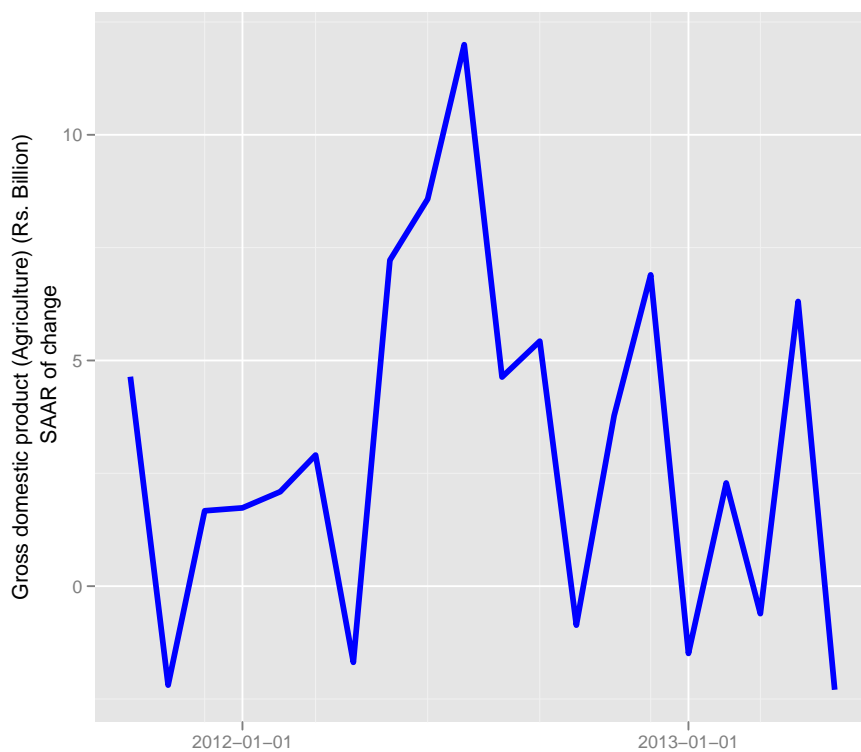
	nsa	sa	yoy	saar
2007 Q1	9116.03	9402.67	9.72	6.19
2007 Q2	9045.29	9574.78	9.53	7.26
2007 Q3	10258.18	9895.52	9.57	13.18
2007 Q4	10546.85	10073.92	8.57	7.15
2008 Q1	10009.47	10308.86	9.80	9.22
2008 Q2	9815.99	10347.01	8.52	1.48
2008 Q3	10849.93	10503.32	5.77	6.00
2008 Q4	10911.35	10723.98	3.46	8.32
2009 Q1	10601.28	11001.53	5.91	10.22
2009 Q2	10725.06	11240.80	9.26	8.61
2009 Q3	11682.45	11362.01	7.67	4.29
2009 Q4	12151.94	11631.69	11.37	9.38
2010 Q1	11606.11	11926.10	9.48	10.00
2010 Q2	11652.64	12213.71	8.65	9.53
2010 Q3	12751.40	12425.52	9.15	6.88
2010 Q4	13359.89	12604.42	9.94	5.72
2011 Q1	12474.95	12818.71	7.49	6.74
2011 Q2	12411.06	12998.16	6.51	5.56
2011 Q3	13512.52	13189.71	5.97	5.85
2011 Q4	14037.27	13392.78	5.07	6.11
2012 Q1	13142.55	13514.20	5.35	3.61
2012 Q2	13055.31	13668.57	5.19	4.54
2012 Q3	14148.69	13822.36	4.71	4.48
2012 Q4	14707.82	14018.29	4.78	5.63

## 2 Gross domestic product (Expenditure)



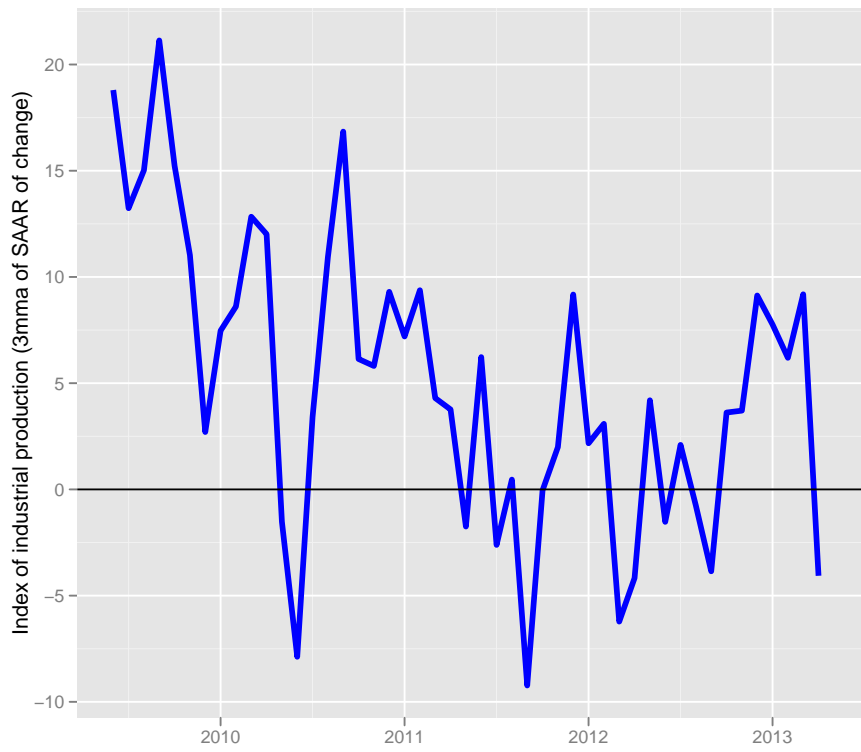
	nsa	sa	yoy	saar
2007 Q1	11264.83	11738.54	18.30	11.42
2007 Q2	11508.04	12082.80	14.60	11.56
2007 Q3	13216.49	12763.08	16.00	21.91
2007 Q4	13881.55	13196.17	15.78	13.35
2008 Q1	13334.64	13871.86	18.37	19.97
2008 Q2	13661.84	14354.64	18.72	13.68
2008 Q3	14652.85	14180.42	10.87	-4.88
2008 Q4	14651.30	14295.55	5.55	3.23
2009 Q1	14326.48	14886.04	7.44	16.19
2009 Q2	14976.39	15763.44	9.62	22.91
2009 Q3	17004.81	16475.67	16.05	17.68
2009 Q4	18470.60	17487.72	26.07	23.85
2010 Q1	17473.25	18145.96	21.96	14.78
2010 Q2	17901.64	18888.90	19.53	16.05
2010 Q3	20487.28	19856.99	20.48	19.99
2010 Q4	22090.97	20862.06	19.60	19.75
2011 Q1	20673.24	21475.86	18.31	11.60
2011 Q2	20781.94	21981.31	16.09	9.31
2011 Q3	23456.26	22724.64	14.49	13.30
2011 Q4	24838.01	23411.18	12.44	11.91
2012 Q1	23150.32	24063.97	11.98	11.00
2012 Q2	23171.16	24553.37	11.50	8.05
2012 Q3	26375.19	25532.99	12.44	15.65
2012 Q4	27509.52	25905.93	10.76	5.80

### 3 Gross domestic product (Agriculture)



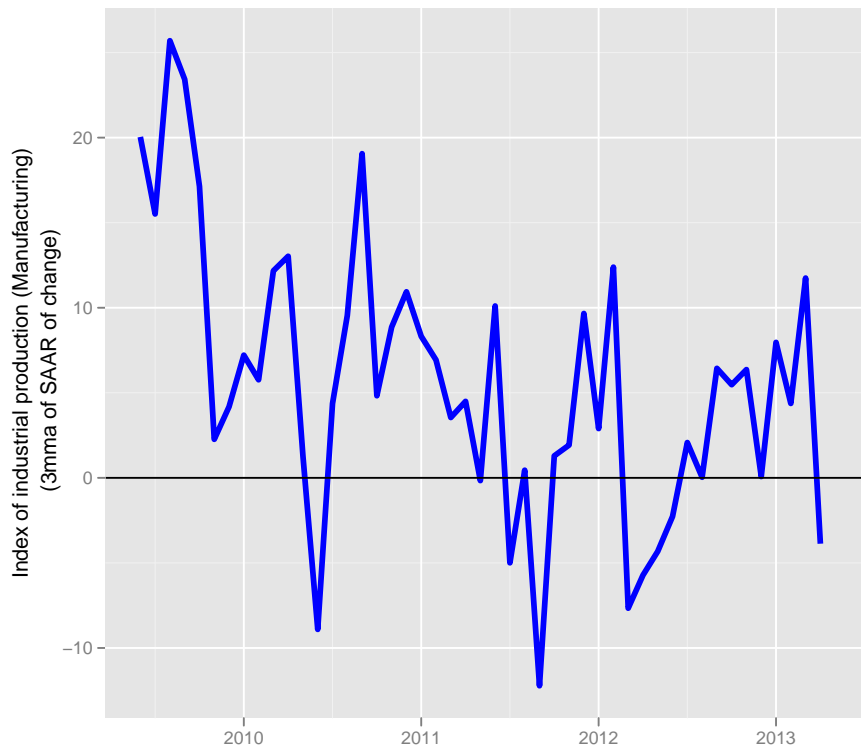
	nsa	sa	yoy	saar
2007 Q1	1513.36	1589.77	4.52	4.65
2007 Q2	1224.18	1610.81	4.68	5.26
2007 Q3	2116.49	1643.90	9.54	8.13
2007 Q4	1696.77	1620.73	3.31	-5.68
2008 Q1	1557.34	1639.64	2.91	4.64
2008 Q2	1237.80	1630.68	1.11	-2.19
2008 Q3	2038.10	1637.50	-3.70	1.67
2008 Q4	1723.64	1644.62	1.58	1.73
2009 Q1	1566.74	1653.24	0.60	2.09
2009 Q2	1262.75	1665.29	2.02	2.90
2009 Q3	2010.85	1658.28	-1.34	-1.69
2009 Q4	1769.54	1688.49	2.66	7.22
2010 Q1	1632.31	1725.09	4.19	8.58
2010 Q2	1346.78	1777.61	6.65	12.00
2010 Q3	2246.98	1798.32	11.74	4.63
2010 Q4	1908.68	1822.89	7.86	5.43
2011 Q1	1719.66	1818.95	5.35	-0.86
2011 Q2	1389.87	1836.21	3.20	3.78
2011 Q3	2338.94	1868.15	4.09	6.90
2011 Q4	1946.49	1861.20	1.98	-1.49
2012 Q1	1768.88	1871.87	2.86	2.29
2012 Q2	1413.34	1869.02	1.69	-0.61
2012 Q3	2381.06	1898.72	1.80	6.31
2012 Q4	1972.82	1887.86	1.35	-2.30

## 4 Index of industrial production



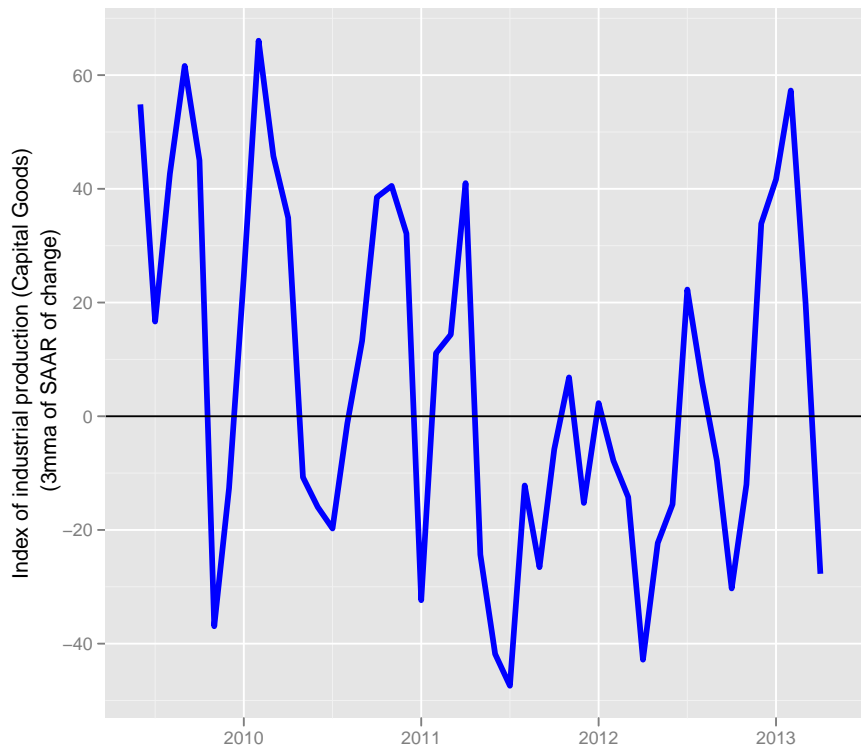
	nsa	sa	yoy	saar	saar.3mma
2011 Jun	171.40	172.78	9.45	30.68	6.23
2011 Jul	167.20	169.86	3.66	-20.45	-2.61
2011 Aug	161.40	168.62	3.40	-8.85	0.46
2011 Sep	164.30	168.84	2.50	1.61	-9.23
2011 Oct	158.30	169.85	-4.98	7.11	-0.04
2011 Nov	167.50	169.46	6.01	-2.74	1.99
2011 Dec	180.30	172.76	2.68	23.15	9.17
2011 Jan	177.60	170.77	0.97	-13.90	2.17
2012 Feb	175.20	170.77	4.29	0.01	3.09
2012 Mar	187.60	170.09	-2.85	-4.78	-6.22
2012 Apr	164.10	169.00	-1.26	-7.75	-4.17
2012 May	170.30	172.57	2.47	25.12	4.20
2012 Jun	168.00	169.44	-1.98	-21.96	-1.53
2012 Jul	167.10	169.89	-0.06	3.12	2.10
2012 Aug	164.70	172.24	2.04	16.53	-0.77
2012 Sep	163.10	167.82	-0.73	-31.22	-3.86
2012 Oct	171.60	171.43	8.40	25.54	3.62
2012 Nov	165.80	173.85	-1.01	16.80	3.71
2012 Dec	179.30	171.69	-0.55	-14.96	9.13
2013 Jan	182.00	174.79	2.48	21.44	7.76
2013 Feb	176.00	176.56	0.46	12.10	6.19
2013 Mar	194.00	175.68	3.41	-5.98	9.18
2013 Apr	167.80	173.02	2.25	-18.31	-4.07
2013 May					

## 5 Index of industrial production (Manufacturing)



	nsa	sa	yoy	saar	saar.3mma
2011 Jun	184.00	185.40	11.18	44.78	10.11
2011 Jul	177.40	179.96	3.08	-35.75	-5.00
2011 Aug	171.70	178.81	3.93	-7.68	0.45
2011 Sep	177.40	179.82	3.08	6.76	-12.22
2011 Oct	165.90	180.54	-5.95	4.79	1.29
2011 Nov	177.80	179.67	6.59	-5.78	1.93
2011 Dec	192.60	184.22	2.83	29.97	9.66
2011 Jan	188.60	181.85	1.13	-15.50	2.90
2012 Feb	186.80	185.33	4.12	22.69	12.39
2012 Mar	198.70	180.72	-3.64	-30.18	-7.66
2012 Apr	173.00	179.27	-1.76	-9.67	-5.72
2012 May	179.00	183.33	2.58	26.89	-4.32
2012 Jun	178.10	179.70	-3.21	-24.03	-2.27
2012 Jul	177.40	180.20	0.00	3.37	2.08
2012 Aug	175.80	183.35	2.39	20.76	0.03
2012 Sep	174.60	182.62	-1.58	-4.82	6.44
2012 Oct	182.40	182.69	9.95	0.48	5.48
2012 Nov	176.40	186.29	-0.79	23.43	6.36
2012 Dec	191.10	182.65	-0.78	-23.68	0.08
2013 Jan	193.60	186.36	2.65	24.14	7.96
2013 Feb	190.40	188.34	1.93	12.66	4.37
2013 Mar	207.10	188.09	4.23	-1.57	11.75
2013 Apr	177.80	184.57	2.77	-22.71	-3.87
2013 May					

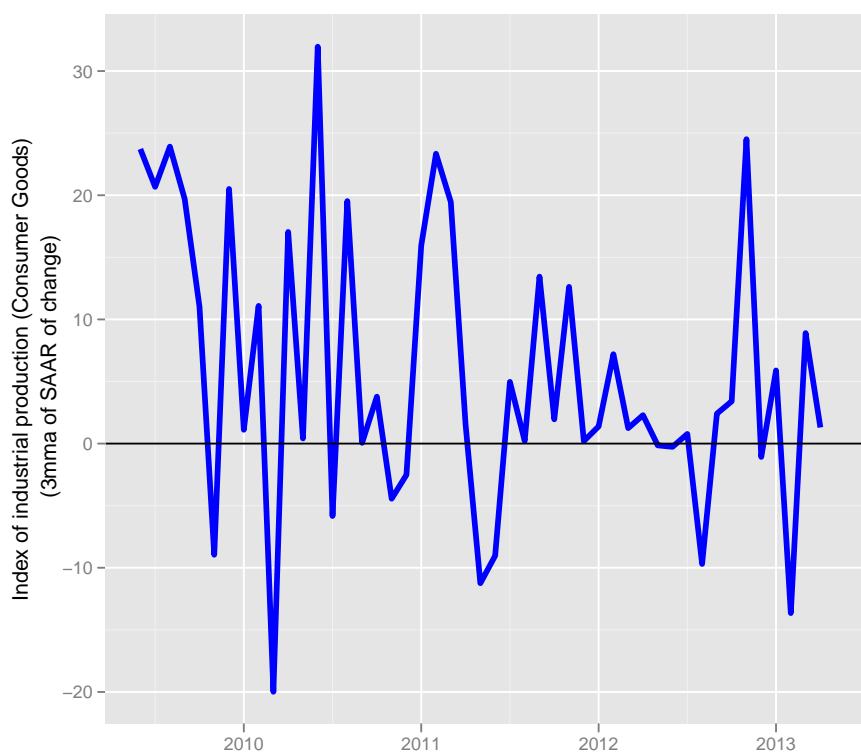
## 6 Index of industrial production (Capital goods)



	nsa	sa	yoy	saar	saar.3mma
2011 Jun	325.20	280.78	38.74	19.87	-41.82
2011 Jul	248.50	268.60	-13.69	-53.20	-47.41
2011 Aug	261.60	267.88	3.97	-3.21	-12.18
2011 Sep	286.80	262.74	-6.52	-23.24	-26.55
2011 Oct	225.40	264.74	-26.48	9.09	-5.79
2011 Nov	257.30	272.50	-4.67	34.65	6.83
2011 Dec	263.50	252.91	-15.98	-89.49	-15.25
2011 Jan	256.80	266.28	-2.65	61.78	2.31
2012 Feb	261.80	267.22	10.46	4.27	-7.81
2012 Mar	313.20	244.08	-20.14	-108.71	-14.22
2012 Apr	207.90	239.24	-21.49	-24.01	-42.82
2012 May	227.30	252.73	-8.57	65.82	-22.30
2012 Jun	235.00	234.81	-27.74	-88.27	-15.49
2012 Jul	234.00	252.95	-5.84	89.31	22.29
2012 Aug	250.00	256.60	-4.43	17.19	6.08
2012 Sep	248.70	230.25	-13.28	-130.01	-7.84
2012 Oct	241.10	234.50	6.97	21.96	-30.29
2012 Nov	235.40	249.02	-8.51	72.07	-12.00
2012 Dec	260.70	250.60	-1.06	7.60	33.87
2013 Jan	250.50	260.25	-2.45	45.34	41.67
2013 Feb	284.50	287.37	8.67	118.93	57.29
2013 Mar	341.50	263.33	9.04	-104.79	19.83
2013 Apr	210.00	242.83	1.01	-97.28	-27.71
2013 May					

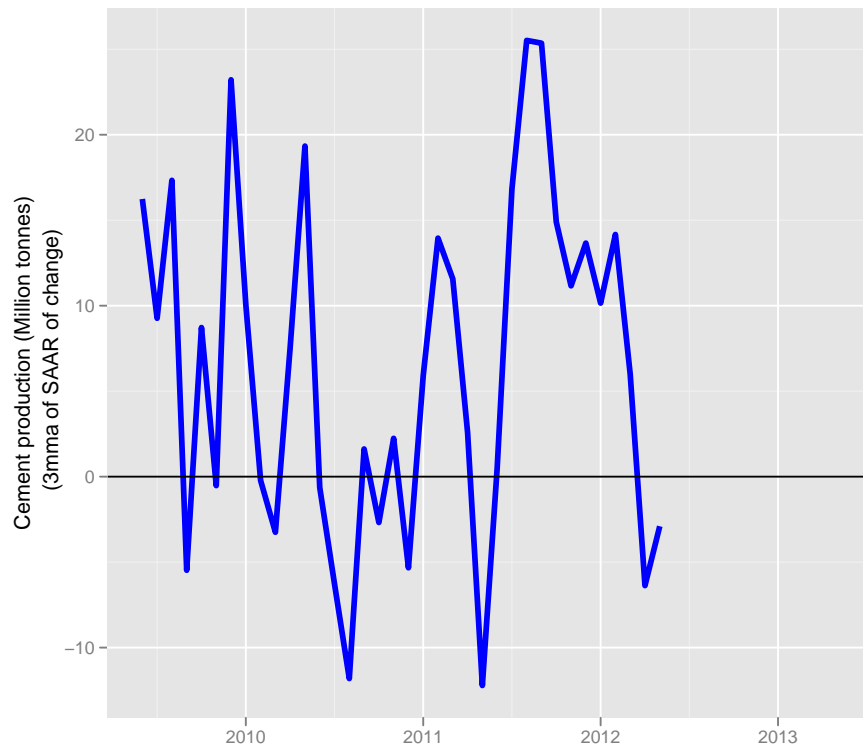


## 7 Index of industrial production (Consumer goods)



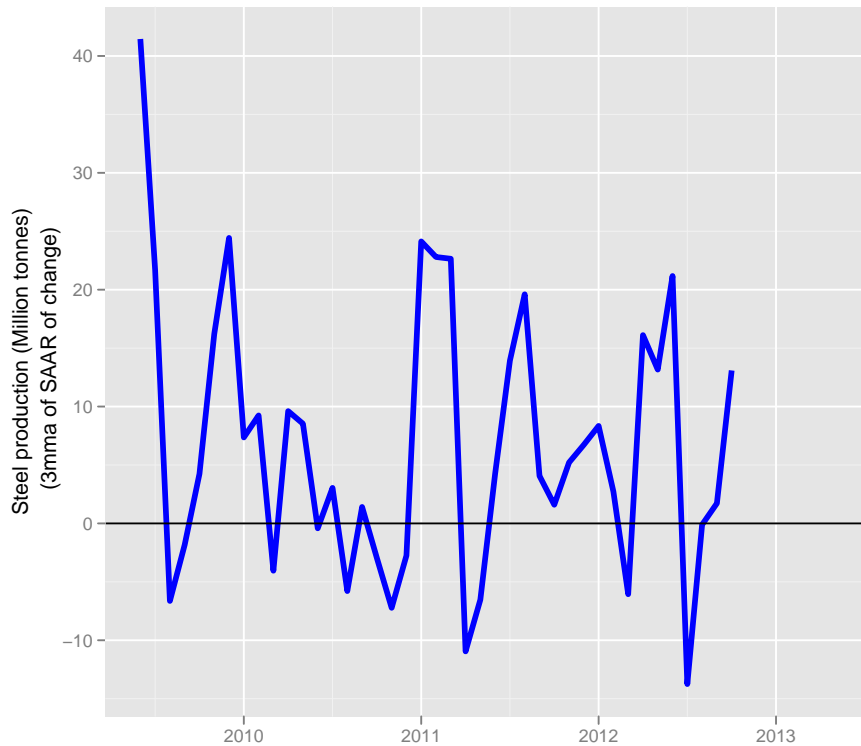
	nsa	sa	yoy	saar	saar.3mma
2011 Jun	179.10	181.46	3.11	3.57	-9.03
2011 Jul	182.00	185.06	6.37	23.53	4.97
2011 Aug	167.20	181.02	2.14	-26.46	0.21
2011 Sep	177.80	187.67	5.71	43.26	13.45
2011 Oct	168.40	185.96	0.06	-10.94	1.95
2011 Nov	184.70	186.83	12.83	5.54	12.62
2011 Dec	208.00	187.76	10.11	6.01	0.20
2011 Jan	202.20	186.61	2.48	-7.41	1.38
2012 Feb	199.20	190.22	-0.40	22.99	7.20
2012 Mar	204.70	188.35	1.09	-11.84	1.25
2012 Apr	187.50	187.68	3.71	-4.28	2.29
2012 May	187.10	190.15	4.35	15.70	-0.14
2012 Jun	185.80	188.23	3.74	-12.20	-0.26
2012 Jul	183.30	188.04	0.71	-1.16	0.78
2012 Aug	173.30	185.60	3.65	-15.72	-9.70
2012 Sep	177.80	189.36	0.00	24.12	2.41
2012 Oct	191.70	189.65	13.84	1.81	3.40
2012 Nov	184.20	197.33	-0.27	47.62	24.52
2012 Dec	200.60	188.86	-3.56	-52.66	-1.08
2013 Jan	207.20	192.46	2.47	22.71	5.89
2013 Feb	200.00	190.71	0.40	-11.01	-13.65
2013 Mar	208.30	193.11	1.76	15.00	8.90
2013 Apr	192.70	193.09	2.77	-0.10	1.30
2013 May					

## 8 Cement production



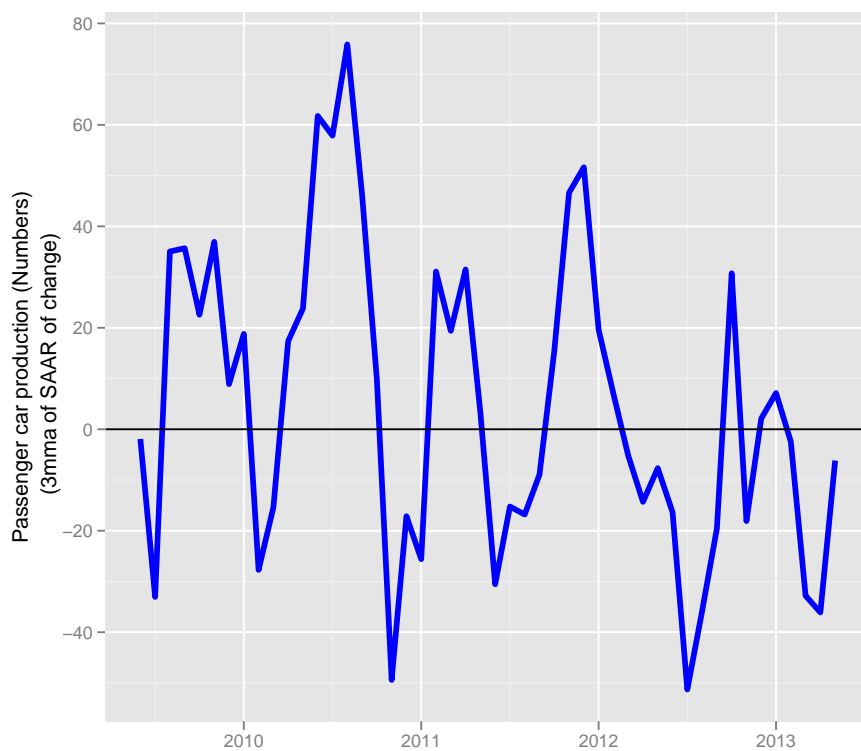
	nsa	sa	yoy	saar	saar.3mma
2011 Jun	17.43	17.58	1.89	12.87	0.47
2011 Jul	18.13	18.38	12.01	53.25	16.83
2011 Aug	17.05	18.54	7.73	10.43	25.52
2011 Sep	15.85	18.73	1.98	12.39	25.36
2011 Oct	18.62	19.07	0.73	21.87	14.90
2011 Nov	17.62	19.06	18.06	-0.78	11.16
2011 Dec	19.67	19.38	13.71	19.89	13.66
2011 Jan	20.63	19.57	11.96	11.34	10.15
2012 Feb	20.34	19.75	10.25	11.26	14.17
2012 Mar	22.40	19.67	7.02	-4.63	5.99
2012 Apr	20.07	19.26	9.30	-25.76	-6.37
2012 May	20.11	19.61	12.74	21.68	-2.90
2012 Jun					
2012 Jul					
2012 Aug					
2012 Sep					
2012 Oct					
2012 Nov					
2012 Dec					
2013 Jan					
2013 Feb					
2013 Mar					
2013 Apr					
2013 May					

## 9 Steel Production



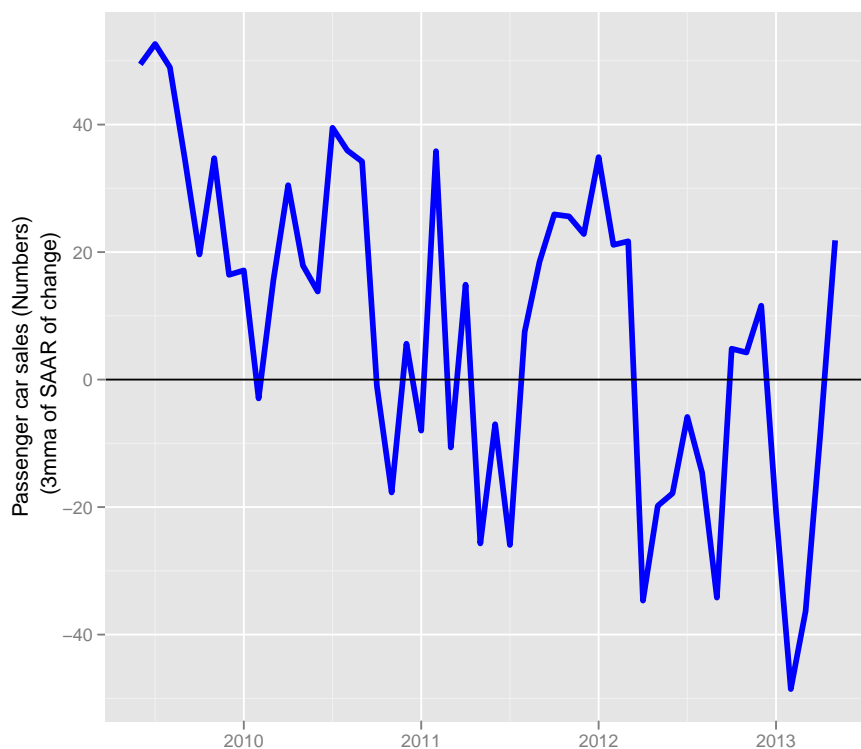
	nsa	sa	yoy	saar	saar.3mma
2011 Jun	5.96	6.01	7.31	44.13	4.26
2011 Jul	6.16	6.08	6.32	12.06	13.93
2011 Aug	6.16	6.09	7.37	2.62	19.61
2011 Sep	5.95	6.08	6.98	-2.48	4.07
2011 Oct	6.15	6.10	6.96	4.66	1.60
2011 Nov	6.00	6.17	10.52	13.47	5.21
2011 Dec	6.15	6.18	9.63	2.07	6.73
2011 Jan	6.36	6.23	3.45	9.49	8.34
2012 Feb	6.04	6.21	5.32	-3.39	2.72
2012 Mar	6.25	6.09	2.11	-24.27	-6.06
2012 Apr	6.36	6.48	10.98	76.01	16.11
2012 May	6.59	6.42	10.96	-12.25	13.16
2012 Jun	6.38	6.42	6.96	-0.24	21.17
2012 Jul	6.36	6.26	3.23	-28.75	-13.75
2012 Aug	6.49	6.42	5.31	28.66	-0.11
2012 Sep	6.30	6.44	5.87	5.25	1.72
2012 Oct	6.51	6.47	5.85	5.36	13.09
2012 Nov					
2012 Dec					
2013 Jan					
2013 Feb					
2013 Mar					
2013 Apr					
2013 May					

## 10 Car production



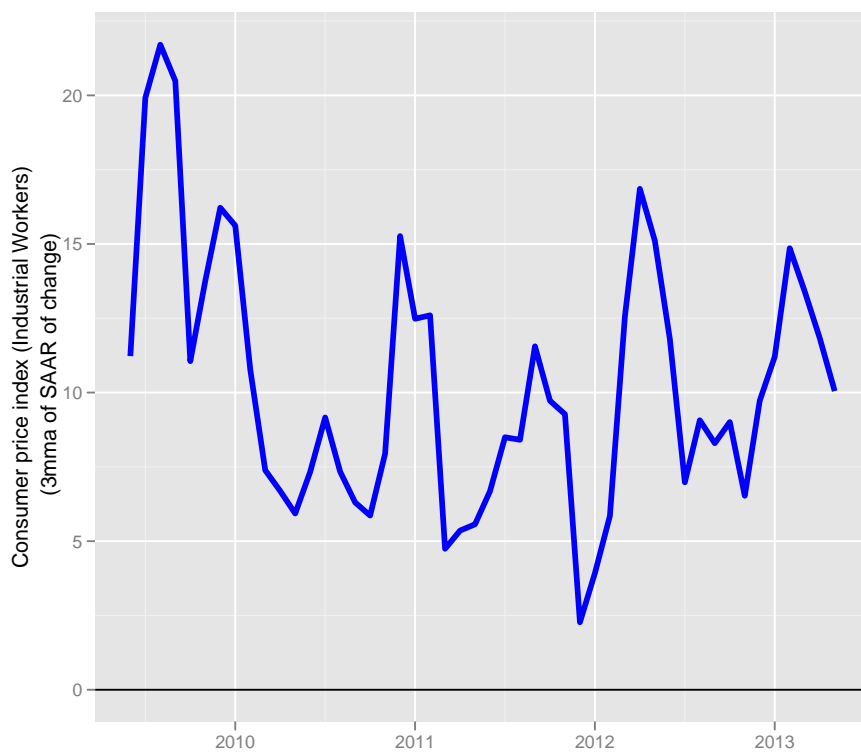
	nsa	sa	yoy	saar	saar.3mma
2011 Jun	180269.00	202788.86	4.04	-34.87	-30.56
2011 Jul	203488.00	207759.39	-1.00	29.06	-15.23
2011 Aug	182238.00	200180.42	-9.35	-44.59	-16.80
2011 Sep	192641.00	198314.92	-8.77	-11.24	-8.92
2011 Oct	157683.00	215919.60	-27.33	102.06	15.41
2011 Nov	223826.00	224924.38	17.83	49.03	46.62
2011 Dec	198425.00	225641.40	-0.50	3.82	51.64
2011 Jan	236422.00	226776.48	13.61	6.02	19.62
2012 Feb	255956.00	228903.49	10.61	11.20	7.01
2012 Mar	256485.00	222739.62	1.58	-32.76	-5.18
2012 Apr	233836.00	218806.31	2.15	-21.38	-14.31
2012 May	220383.00	224562.22	7.93	31.16	-7.66
2012 Jun	189681.00	213813.62	5.22	-58.86	-16.36
2012 Jul	187041.00	192472.12	-8.08	-126.18	-51.29
2012 Aug	150546.00	205315.91	-17.39	77.52	-35.84
2012 Sep	197660.00	203619.73	2.61	-9.95	-19.54
2012 Oct	214423.00	207847.55	35.98	24.66	30.74
2012 Nov	195985.00	196233.09	-12.44	-69.00	-18.10
2012 Dec	181341.00	204695.53	-8.61	50.66	2.11
2013 Jan	219893.00	211592.57	-6.99	39.77	7.14
2013 Feb	218333.00	195041.75	-14.70	-97.74	-2.44
2013 Mar	216956.00	188573.99	-15.41	-40.47	-32.81
2013 Apr	207270.00	193328.83	-11.36	29.88	-36.11
2013 May	189125.00	192057.24	-14.18	-7.92	-6.17

## 11 Car sales



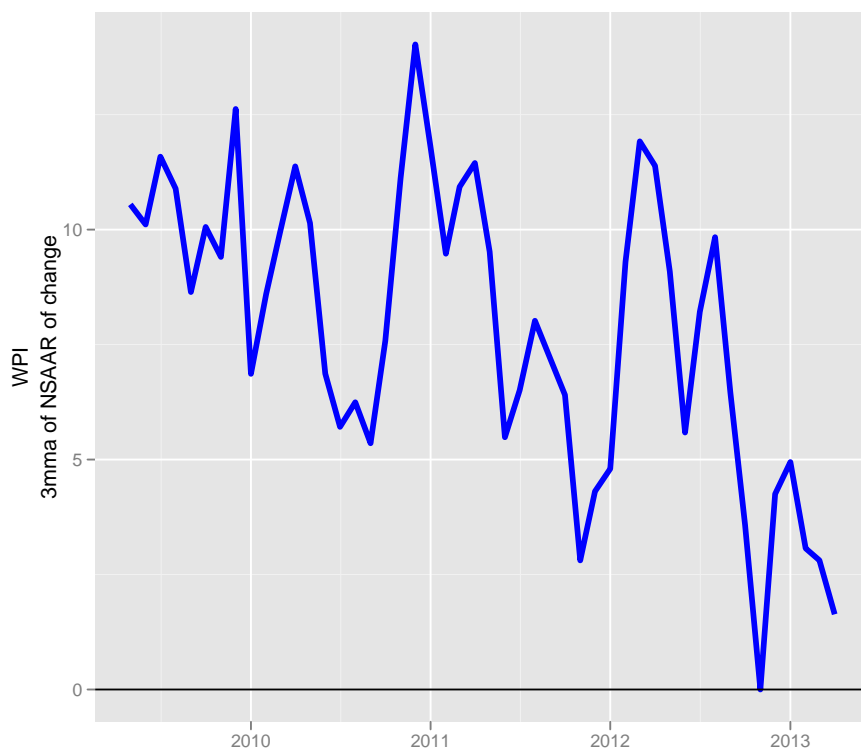
	nsa	sa	yoy	saar	saar.3mma
2011 Jun	187464.00	198195.39	5.34	-9.44	-7.00
2011 Jul	182278.00	197900.66	-5.51	-1.79	-25.94
2011 Aug	193859.00	203544.44	-1.69	33.74	7.51
2011 Sep	205035.00	207559.17	0.83	23.44	18.47
2011 Oct	173001.00	211145.28	-18.26	20.56	25.91
2011 Nov	213603.00	216995.51	12.17	32.80	25.60
2011 Dec	200218.00	219751.81	7.51	15.15	22.83
2011 Jan	245473.00	230391.93	13.98	56.74	34.89
2012 Feb	248132.00	228767.17	7.81	-8.49	21.13
2012 Mar	279349.00	231997.23	15.10	16.82	21.69
2012 Apr	206027.00	211267.29	0.56	-112.32	-34.66
2012 May	208265.00	217717.20	8.26	36.09	-19.80
2012 Jun	209709.00	221876.10	11.87	22.71	-17.84
2012 Jul	190604.00	208197.74	4.57	-76.36	-5.85
2012 Aug	154246.00	209913.29	-20.43	9.85	-14.60
2012 Sep	200595.00	203696.39	-2.17	-36.08	-34.20
2012 Oct	214948.00	210734.63	24.25	40.76	4.84
2012 Nov	209630.00	212157.38	-1.86	8.07	4.25
2012 Dec	192204.00	209686.81	-4.00	-14.06	11.59
2013 Jan	214349.00	200104.98	-12.68	-56.13	-20.70
2013 Feb	204310.00	187911.60	-17.66	-75.44	-48.54
2013 Mar	230693.00	191485.41	-17.42	22.61	-36.32
2013 Apr	191426.00	195961.16	-7.09	27.73	-8.37
2013 May	189355.00	198459.89	-9.08	15.20	21.85

## 12 Consumer Price Index (Industrial workers)



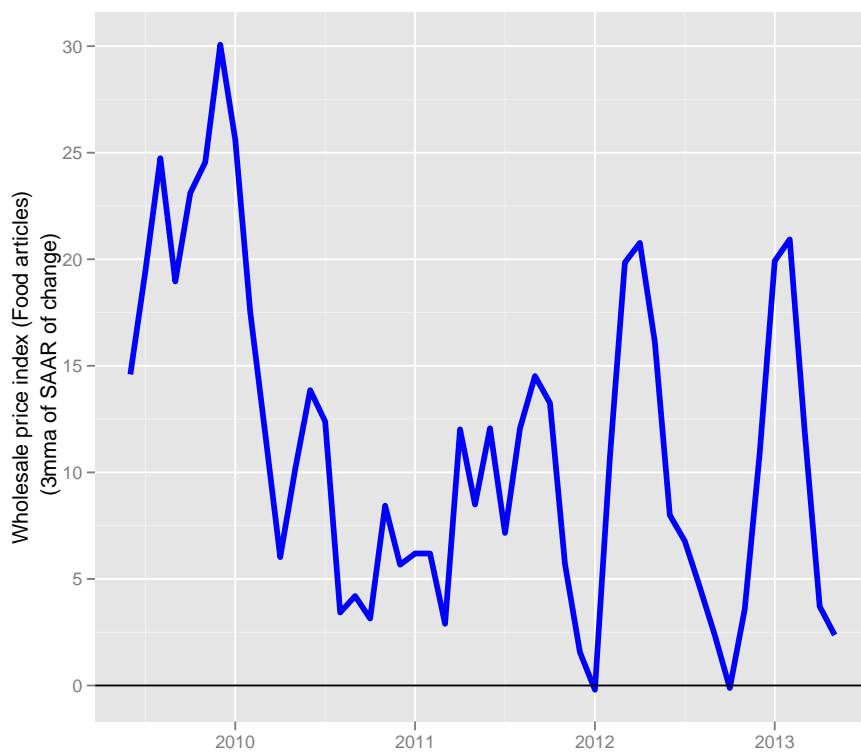
	nsa	sa	yoy	saar	saar.3mma
2011 Jun	189.00	190.08	8.62	8.79	6.68
2011 Jul	193.00	191.59	8.43	9.53	8.50
2011 Aug	194.00	192.70	8.99	6.92	8.41
2011 Sep	197.00	195.65	10.06	18.23	11.56
2011 Oct	198.00	196.31	9.39	4.03	9.72
2011 Nov	199.00	197.22	9.34	5.56	9.27
2011 Dec	197.00	196.76	6.49	-2.78	2.27
2011 Jan	198.00	198.24	5.32	8.99	3.92
2012 Feb	199.00	200.12	7.57	11.33	5.85
2012 Mar	201.00	203.04	8.65	17.34	12.55
2012 Apr	205.00	206.78	10.22	21.90	16.86
2012 May	206.00	207.83	10.16	6.08	15.11
2012 Jun	208.00	209.12	10.05	7.43	11.80
2012 Jul	212.00	210.42	9.84	7.43	6.98
2012 Aug	214.00	212.59	10.31	12.35	9.07
2012 Sep	215.00	213.50	9.14	5.11	8.30
2012 Oct	217.00	215.21	9.60	9.56	9.01
2012 Nov	218.00	216.09	9.55	4.91	6.53
2012 Dec	219.00	218.76	11.17	14.72	9.73
2013 Jan	221.00	221.32	11.62	13.99	11.21
2013 Feb	223.00	224.27	12.06	15.86	14.86
2013 Mar	224.00	226.21	11.44	10.35	13.40
2013 Apr	226.00	227.97	10.24	9.30	11.84
2013 May	228.00	229.97	10.68	10.50	10.05

## 13 Wholesale price index



	nsa	yoy	nsaar	nsaar.3mma
2011 Jun	153.10	9.51	5.50	9.52
2011 Jul	154.20	9.36	8.59	5.48
2011 Aug	154.90	9.78	5.44	6.51
2011 Sep	156.20	10.00	10.03	8.02
2011 Oct	157.00	9.87	6.13	7.20
2011 Nov	157.40	9.46	3.05	6.40
2011 Dec	157.30	7.74	-0.76	2.81
2012 Jan	158.70	7.23	10.63	4.31
2012 Feb	159.30	7.56	4.53	4.80
2012 Mar	161.00	7.69	12.74	9.30
2012 Apr	163.50	7.50	18.49	11.92
2012 May	163.90	7.55	2.93	11.39
2012 Jun	164.70	7.58	5.84	9.09
2012 Jul	165.80	7.52	7.99	5.59
2012 Aug	167.30	8.01	10.81	8.21
2012 Sep	168.80	8.07	10.71	9.84
2012 Oct	168.50	7.32	-2.13	6.46
2012 Nov	168.80	7.24	2.13	3.57
2012 Dec	168.80	7.31	0.00	0.00
2013 Jan	170.30	7.31	10.62	4.25
2013 Feb	170.90	7.28	4.22	4.95
2013 Mar	170.10	5.65	-5.63	3.07
2013 Apr	171.50	4.89	9.84	2.81
2013 May	171.60	4.70	0.70	1.64

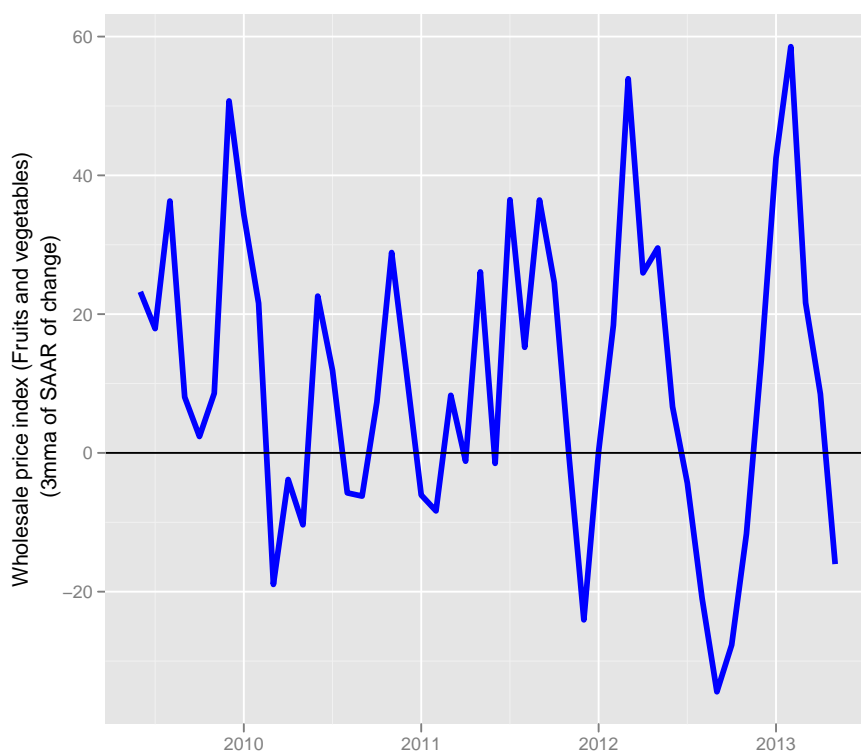
## 14 Wholesale price index (Food articles)



	nsa	sa	yoy	saar	saar.3mma
2011 Jun	188.80	186.13	7.64	10.30	12.07
2011 Jul	192.80	188.02	8.19	12.15	7.16
2011 Aug	193.70	190.19	9.62	13.76	12.07
2011 Sep	197.20	193.01	9.62	17.65	14.52
2011 Oct	199.30	194.36	10.17	8.36	13.26
2011 Nov	196.50	192.93	8.32	-8.88	5.71
2011 Dec	190.90	193.77	0.79	5.21	1.56
2011 Jan	191.10	194.26	-0.68	3.08	-0.20
2012 Feb	192.40	198.16	6.12	23.82	10.70
2012 Mar	197.10	203.62	10.11	32.65	19.85
2012 Apr	207.20	204.62	10.92	5.84	20.77
2012 May	206.10	206.30	10.63	9.85	16.11
2012 Jun	209.40	207.73	10.91	8.28	7.99
2012 Jul	212.40	208.11	10.17	2.19	6.77
2012 Aug	211.80	208.69	9.34	3.36	4.61
2012 Sep	213.10	208.96	8.06	1.54	2.36
2012 Oct	212.70	208.05	6.72	-5.25	-0.12
2012 Nov	213.80	210.57	8.80	14.47	3.58
2012 Dec	211.20	214.75	10.63	23.58	10.93
2013 Jan	214.70	218.67	12.35	21.70	19.92
2013 Feb	215.40	221.88	11.95	17.51	20.93
2013 Mar	214.10	221.24	8.63	-3.47	11.91
2013 Apr	219.80	220.71	6.08	-2.92	3.71
2013 May	223.10	223.20	8.25	13.49	2.37

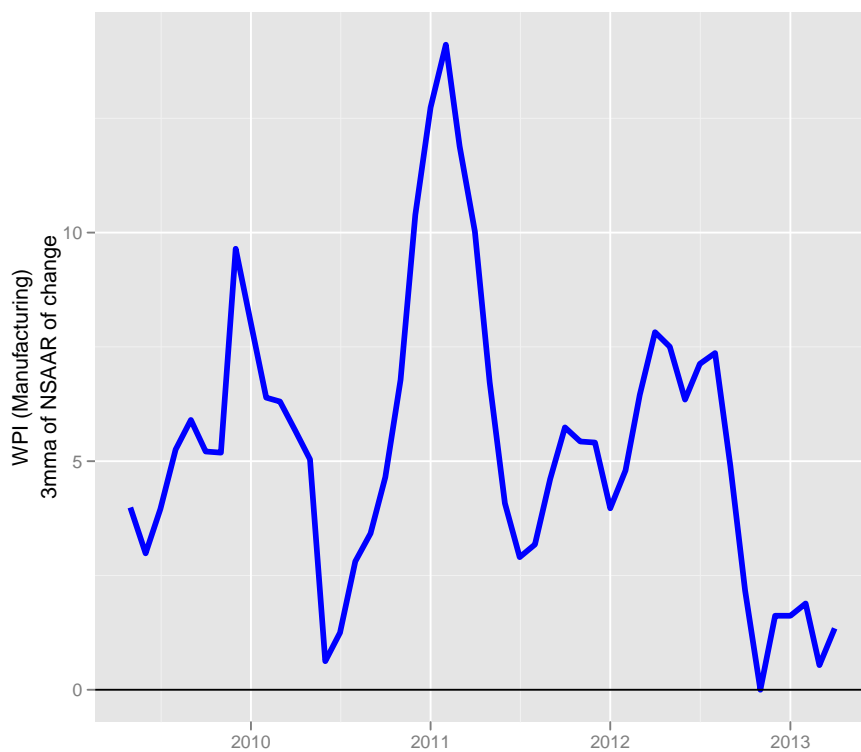


## 15 Wholesale price index (Fruits and vegetables)



	nsa	sa	yoy	saar	saar.3mma
2011 Jun	180.90	168.95	7.49	-32.65	-1.51
2011 Jul	191.20	175.55	11.62	45.96	36.49
2011 Aug	191.40	180.34	18.29	32.35	15.22
2011 Sep	194.80	185.07	15.06	31.03	36.45
2011 Oct	198.70	186.66	13.48	10.27	24.55
2011 Nov	189.80	180.10	8.96	-42.94	-0.54
2011 Dec	166.20	174.26	-15.25	-39.51	-24.06
2011 Jan	160.80	186.77	-22.17	83.16	0.24
2012 Feb	166.00	188.57	0.55	11.54	18.40
2012 Mar	182.50	199.41	10.01	67.07	53.92
2012 Apr	215.30	199.28	11.04	-0.78	25.94
2012 May	208.50	203.02	14.81	22.30	29.53
2012 Jun	212.70	202.76	17.58	-1.56	6.65
2012 Jul	211.30	197.13	10.51	-33.76	-4.34
2012 Aug	201.80	192.66	5.43	-27.56	-20.96
2012 Sep	194.90	186.04	0.05	-41.95	-34.42
2012 Oct	192.90	183.95	-2.92	-13.52	-27.68
2012 Nov	195.40	187.12	2.95	20.49	-11.66
2012 Dec	181.00	192.35	8.90	33.06	13.34
2013 Jan	190.40	204.57	18.41	73.93	42.49
2013 Feb	190.00	216.62	14.46	68.65	58.55
2013 Mar	186.60	203.04	2.25	-77.68	21.63
2013 Apr	206.40	208.96	-4.13	34.51	8.49
2013 May	214.40	208.11	2.83	-4.90	-16.02

## 16 Wholesale price index (Manufacturing)

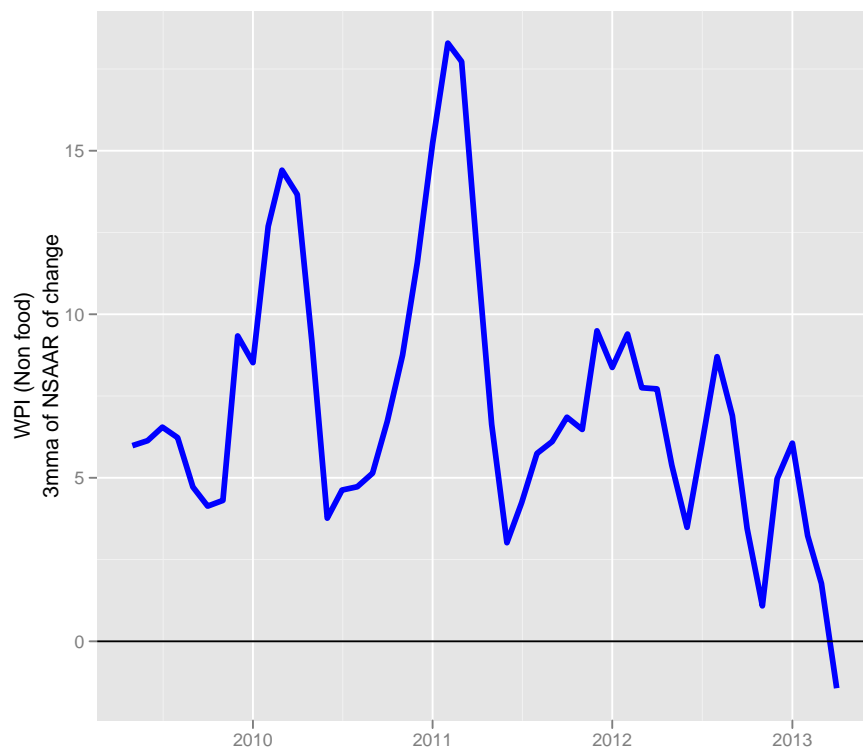


	nsa	yoy	nsaar	nsaar.3mma
2011 Jun	137.90	7.90	4.36	6.73
2011 Jul	138.00	7.73	0.87	4.08
2011 Aug	138.40	7.87	3.47	2.90
2011 Sep	139.00	8.00	5.19	3.18
2011 Oct	139.60	8.05	5.17	4.61
2011 Nov	140.40	8.17	6.86	5.74
2011 Dec	140.90	7.64	4.27	5.43
2012 Jan	141.50	6.71	5.10	5.41
2012 Feb	141.80	5.82	2.54	3.97
2012 Mar	142.60	5.16	6.75	4.80
2012 Apr	143.80	5.27	10.06	6.45
2012 May	144.60	5.24	6.66	7.82
2012 Jun	145.30	5.37	5.80	7.50
2012 Jul	146.10	5.87	6.59	6.35
2012 Aug	147.20	6.36	9.00	7.13
2012 Sep	148.00	6.47	6.50	7.36
2012 Oct	147.90	5.95	-0.81	4.90
2012 Nov	148.00	5.41	0.81	2.17
2012 Dec	148.00	5.04	0.00	0.00
2013 Jan	148.50	4.95	4.05	1.62
2013 Feb	148.60	4.80	0.81	1.62
2013 Mar	148.70	4.28	0.81	1.89
2013 Apr	148.70	3.41	0.00	0.54
2013 May	149.10	3.11	3.22	1.34

## 17 Wholesale price index (Non food)

This series is constructed by excluding food articles and food products from the overall WPI.

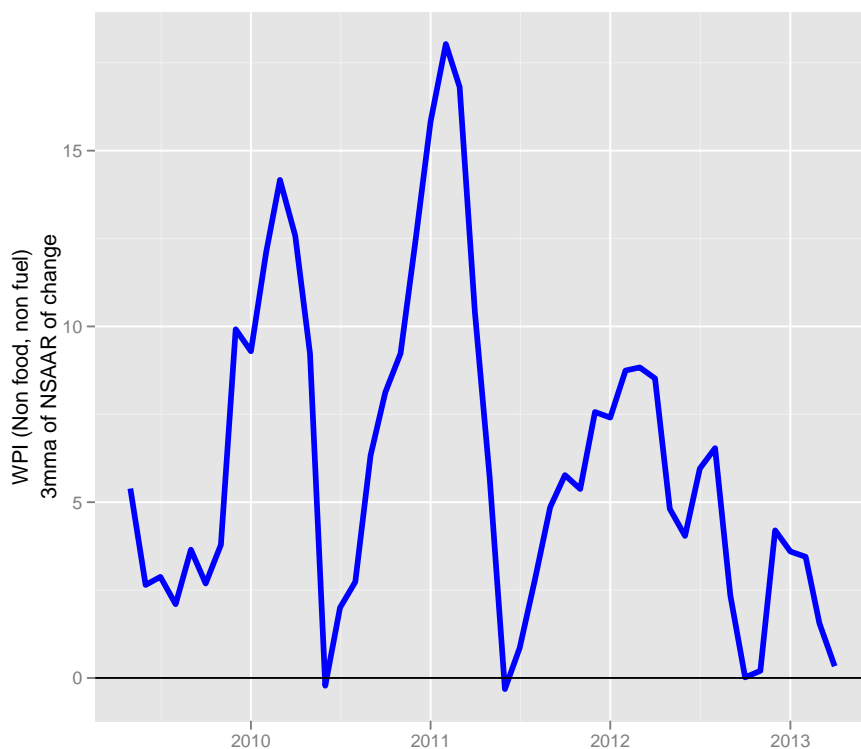
$$\text{WPI (Non food)} = \text{WPI} - \text{WPI (Food articles)} - \text{WPI (Food products)}$$



	nsa	yoy	nsaar	nsaar.3mma
2011 Jun	146.91	10.08	3.15	6.63
2011 Jul	147.41	9.82	4.09	3.02
2011 Aug	148.09	10.00	5.48	4.24
2011 Sep	149.03	10.36	7.66	5.74
2011 Oct	149.68	10.08	5.18	6.11
2011 Nov	150.65	10.04	7.72	6.85
2011 Dec	151.47	9.73	6.54	6.48
2012 Jan	153.27	9.51	14.22	9.49
2012 Feb	153.83	8.17	4.36	8.37
2012 Mar	155.07	7.32	9.60	9.40
2012 Apr	156.27	6.81	9.30	7.75
2012 May	156.83	7.03	4.25	7.72
2012 Jun	157.17	6.98	2.60	5.38
2012 Jul	157.64	6.94	3.60	3.49
2012 Aug	159.20	7.51	11.84	6.01
2012 Sep	160.63	7.78	10.67	8.70
2012 Oct	160.38	7.15	-1.81	6.90
2012 Nov	160.58	6.60	1.50	3.45
2012 Dec	161.06	6.33	3.57	1.08
2013 Jan	162.39	5.95	9.85	4.97
2013 Feb	163.04	5.98	4.76	6.06
2013 Mar	162.37	4.71	-4.92	3.23
2013 Apr	163.11	4.37	5.47	1.77
2013 May	162.45	3.59	-4.85	-1.43

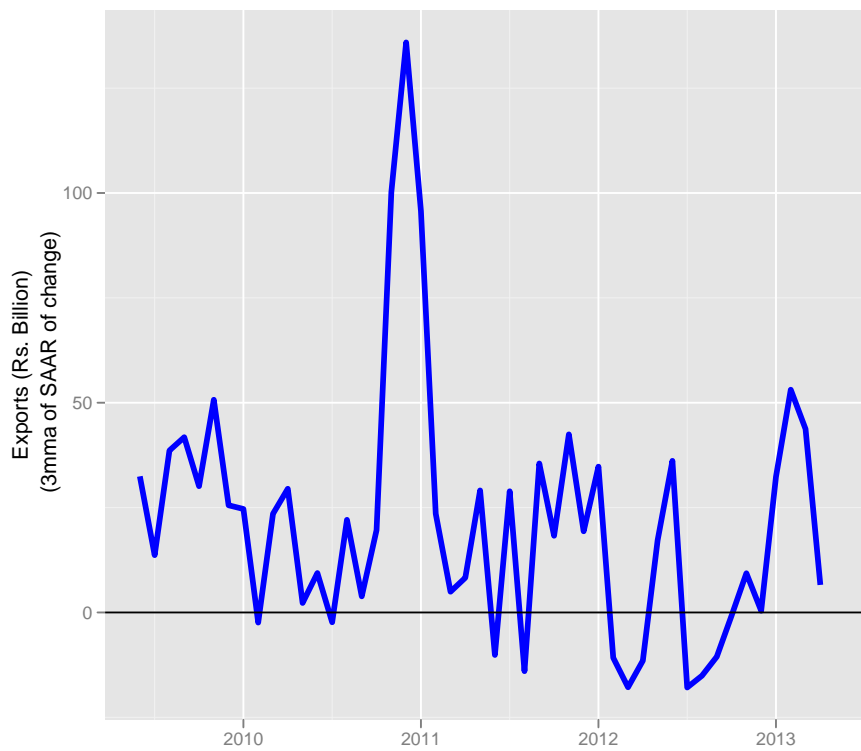
## 18 Wholesale price index (Non food, non fuel)

This series is constructed by excluding food articles, food products and fuel from the overall WPI.  
 $WPI \text{ (Non food, non fuel)} = WPI - WPI \text{ (Food articles)} - WPI \text{ (Food products)} - WPI \text{ (Fuel, power, light and lubricants)}$



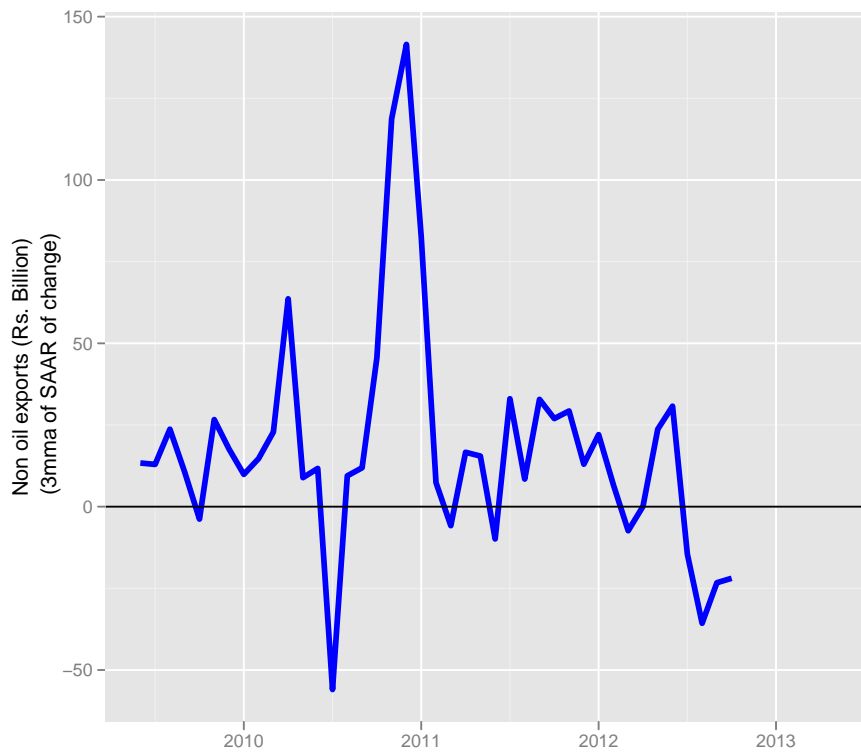
	nsa	yoy	nsaar	nsaar.3mma
2011 Jun	143.32	9.34	1.56	5.70
2011 Jul	142.97	9.20	-2.97	-0.32
2011 Aug	143.44	9.20	3.97	0.85
2011 Sep	144.33	9.35	7.40	2.80
2011 Oct	144.71	8.80	3.21	4.86
2011 Nov	145.52	8.56	6.70	5.77
2011 Dec	146.28	8.31	6.21	5.38
2012 Jan	147.48	7.50	9.78	7.57
2012 Feb	148.24	6.30	6.23	7.41
2012 Mar	149.51	5.82	10.23	8.75
2012 Apr	150.77	5.37	10.04	8.83
2012 May	151.44	5.80	5.29	8.52
2012 Jun	151.32	5.58	-0.90	4.81
2012 Jul	152.30	6.53	7.73	4.04
2012 Aug	153.71	7.16	11.04	5.96
2012 Sep	153.82	6.57	0.84	6.54
2012 Oct	153.20	5.86	-4.84	2.35
2012 Nov	153.71	5.63	4.05	0.02
2012 Dec	153.89	5.20	1.40	0.20
2013 Jan	154.81	4.97	7.14	4.20
2013 Feb	155.10	4.63	2.24	3.60
2013 Mar	155.22	3.82	0.95	3.45
2013 Apr	155.41	3.08	1.47	1.55
2013 May	155.23	2.51	-1.42	0.33

## 19 Exports



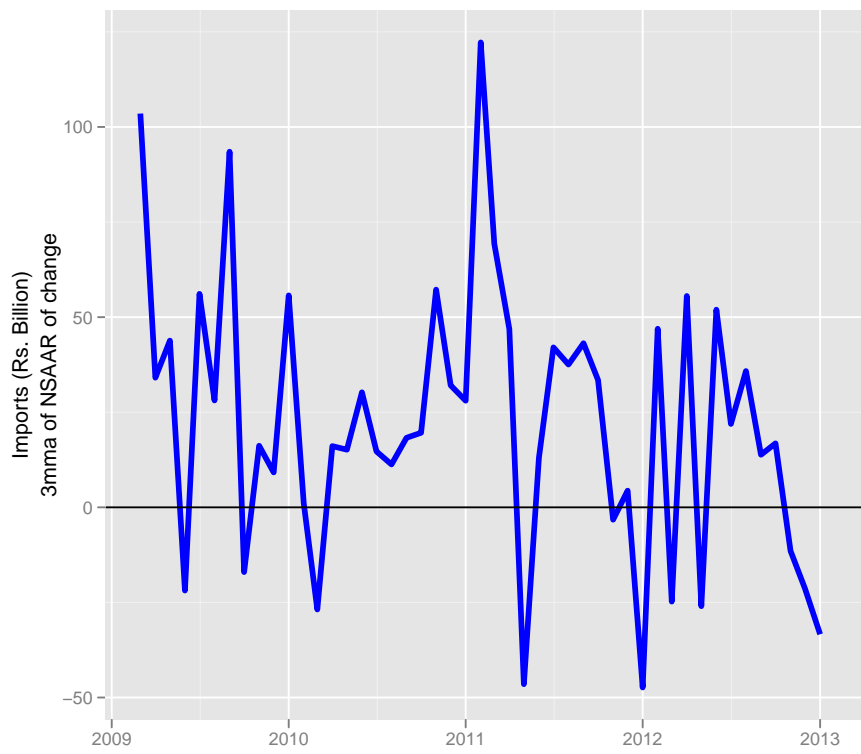
	nsa	sa	yoy	saar	saar.3mma
2011 Jun	1190.39	1122.05	28.86	-80.02	-10.14
2011 Jul	1173.80	1181.47	55.66	61.92	28.89
2011 Aug	1121.48	1158.17	43.29	-23.90	-14.00
2011 Sep	1265.20	1226.25	50.89	68.55	35.52
2011 Oct	1164.06	1236.72	46.19	10.20	18.28
2011 Nov	1183.41	1287.85	22.33	48.62	42.45
2011 Dec	1336.19	1287.02	12.32	-0.77	19.35
2011 Jan	1302.94	1349.02	26.49	56.46	34.77
2012 Feb	1238.74	1253.53	17.30	-88.10	-10.81
2012 Mar	1451.23	1230.89	6.04	-21.86	-17.83
2012 Apr	1231.37	1310.77	18.23	75.45	-11.51
2012 May	1347.53	1308.66	13.15	-1.93	17.22
2012 Jun	1390.13	1347.31	16.78	34.93	36.15
2012 Jul	1261.53	1253.44	7.47	-86.66	-17.89
2012 Aug	1215.40	1260.25	8.37	6.51	-15.08
2012 Sep	1302.14	1312.25	2.92	48.52	-10.55
2012 Oct	1215.63	1251.08	4.43	-57.28	-0.75
2012 Nov	1192.73	1290.05	0.79	36.81	9.35
2012 Dec	1339.14	1313.57	0.22	21.68	0.40
2013 Jan	1348.89	1356.43	3.53	38.53	32.34
2013 Feb	1397.57	1473.22	12.82	99.11	53.11
2013 Mar	1678.36	1465.35	15.65	-6.43	43.74
2013 Apr	1313.95	1378.88	6.71	-72.98	6.57
2013 May					

## 20 Non oil exports



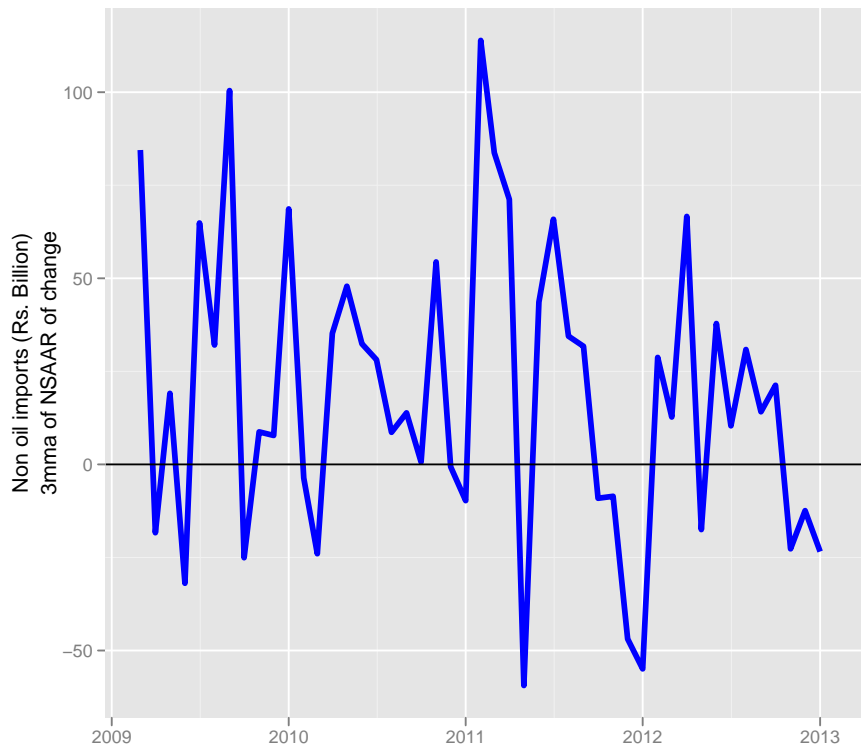
	nsa	sa	yoy	saar	saar.3mma
2011 Jun	972.70	930.89	26.64	-23.19	-9.88
2011 Jul	966.57	962.26	56.65	39.77	33.04
2011 Aug	922.83	969.30	43.85	8.74	8.44
2011 Sep	1033.28	1010.55	47.75	50.01	32.84
2011 Oct	953.10	1029.36	48.54	22.14	26.97
2011 Nov	982.24	1042.95	19.48	15.73	29.30
2011 Dec	1099.65	1043.90	8.78	1.09	12.99
2011 Jan	1062.46	1087.73	25.77	49.35	22.06
2012 Feb	1033.56	1060.49	17.69	-30.43	6.67
2012 Mar	1189.34	1024.84	4.75	-41.03	-7.37
2012 Apr	1006.54	1087.95	23.61	71.71	0.08
2012 May	1136.49	1125.24	19.31	40.43	23.70
2012 Jun	1158.67	1106.76	19.12	-19.87	30.76
2012 Jul	1046.85	1049.28	8.31	-64.00	-14.48
2012 Aug	994.97	1029.15	7.82	-23.24	-35.70
2012 Sep	1049.07	1044.18	1.53	17.40	-23.28
2012 Oct	927.52	993.32	-2.68	-59.92	-21.92
2012 Nov					
2012 Dec					
2013 Jan					
2013 Feb					
2013 Mar					
2013 Apr					
2013 May					

## 21 Imports



	nsa	yoy	nsaar	nsaar.3mma
2011 Jun	1833.21	45.45	-124.50	69.27
2011 Jul	1825.82	31.39	-4.85	46.87
2011 Aug	1810.46	43.42	-10.14	-46.50
2011 Sep	1893.72	39.31	53.96	12.99
2011 Oct	2028.20	40.69	82.32	42.05
2011 Nov	1988.61	53.15	-23.65	37.54
2011 Dec	2109.40	48.24	70.76	43.14
2012 Jan	2205.15	45.65	53.27	33.46
2012 Feb	1972.51	31.66	-133.78	-3.25
2012 Mar	2132.65	38.33	93.67	4.39
2012 Apr	1958.88	20.63	-101.99	-47.37
2012 May	2218.14	9.07	149.16	46.95
2012 Jun	2004.53	9.35	-121.51	-24.78
2012 Jul	2250.80	23.28	139.05	55.57
2012 Aug	2078.59	14.81	-95.52	-25.99
2012 Sep	2282.61	20.54	112.36	51.96
2012 Oct	2377.59	17.23	48.92	21.92
2012 Nov	2273.37	14.32	-53.79	35.83
2012 Dec	2362.91	12.02	46.36	13.83
2013 Jan	2479.66	12.45	57.87	16.81
2013 Feb	2209.12	12.00	-138.64	-11.47
2013 Mar	2239.55	5.01	16.42	-21.45
2013 Apr	2281.15	16.45	22.09	-33.38
2013 May				

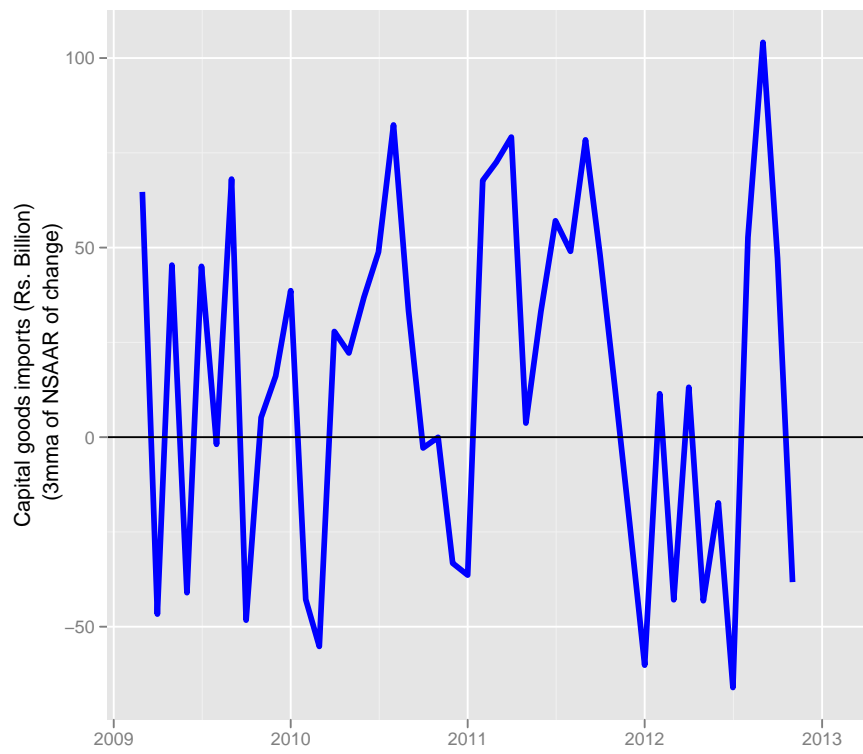
## 22 Non oil imports



	nsa	yoy	nsaar	nsaar.3mma
2011 Jun	1237.69	38.18	-184.51	83.73
2011 Jul	1250.92	25.31	12.76	71.20
2011 Aug	1244.21	34.16	-6.45	-59.40
2011 Sep	1380.25	42.10	124.51	43.61
2011 Oct	1474.82	37.71	79.52	65.86
2011 Nov	1356.13	43.11	-100.68	34.45
2011 Dec	1494.20	48.60	116.34	31.73
2012 Jan	1441.67	34.39	-42.95	-9.09
2012 Feb	1327.39	22.26	-99.10	-8.57
2012 Mar	1328.92	32.37	1.38	-46.89
2012 Apr	1256.67	20.03	-67.08	-54.93
2012 May	1426.26	-1.19	151.91	28.74
2012 Jun	1371.89	10.84	-46.64	12.73
2012 Jul	1484.41	18.67	94.59	66.62
2012 Aug	1365.18	9.72	-100.47	-17.51
2012 Sep	1508.05	9.26	119.44	37.85
2012 Oct	1523.39	3.29	12.14	10.37
2012 Nov	1474.69	8.74	-38.99	30.86
2012 Dec	1562.32	4.56	69.27	14.14
2013 Jan	1606.55	11.44	33.51	21.26
2013 Feb	1393.41	4.97	-170.81	-22.68
2013 Mar	1514.56	13.97	100.04	-12.42
2013 Apr	1515.21	20.57	0.52	-23.41
2013 May				

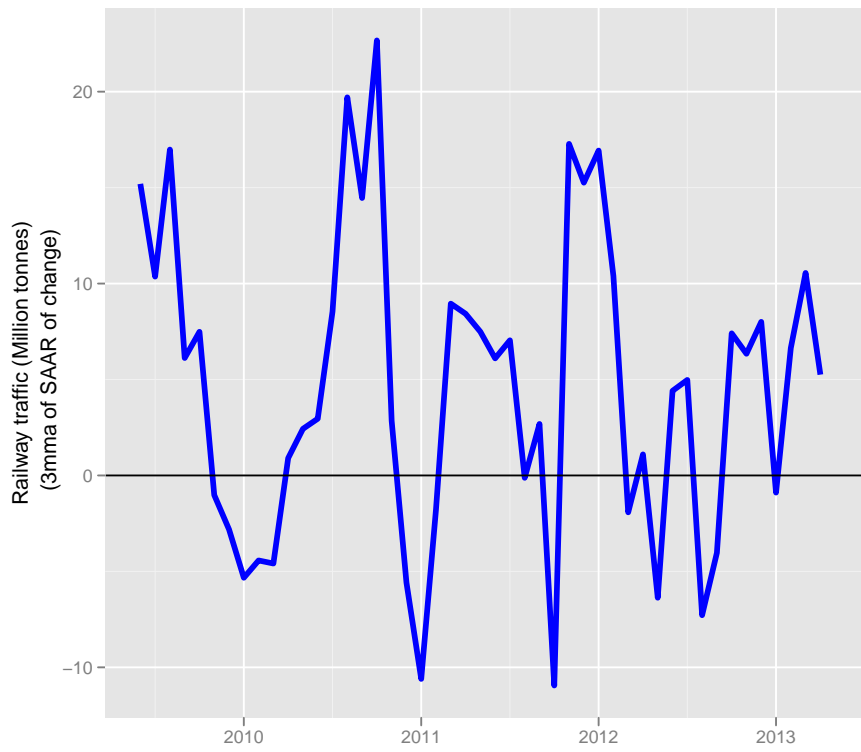


## 23 Capital goods imports



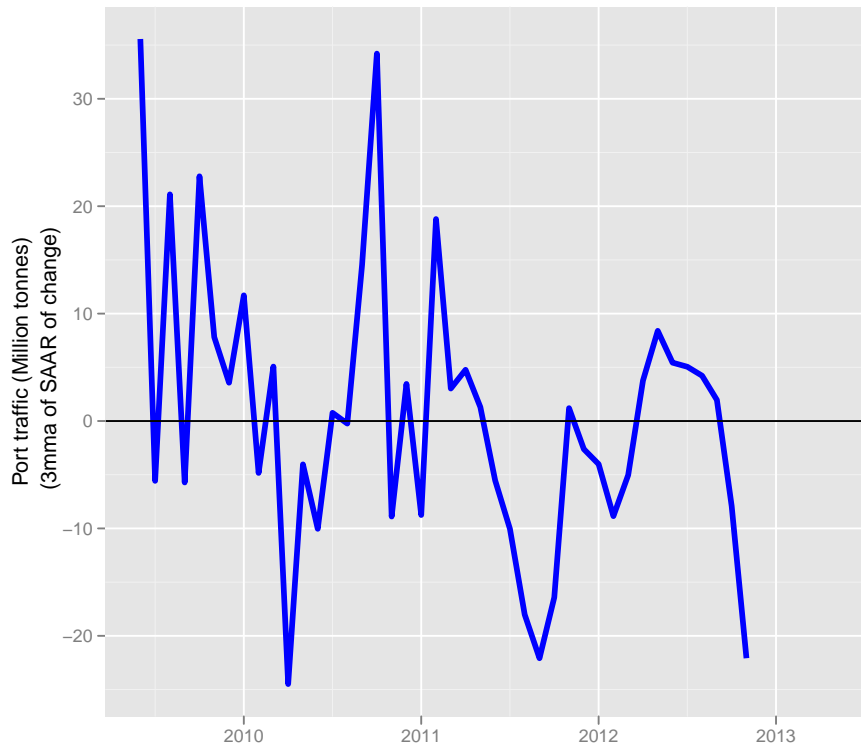
	nsa	yoy	nsaar	nsaar.3mma
2011 Apr	235.79	31.48	-30.65	72.52
2011 May	233.41	24.83	-12.18	79.15
2011 Jun	244.15	46.85	53.96	3.71
2011 Jul	256.17	30.26	57.70	33.16
2011 Aug	269.21	27.44	59.57	57.08
2011 Sep	275.98	35.11	29.80	49.02
2011 Oct	311.65	45.81	145.87	78.41
2011 Nov	303.55	44.72	-31.61	48.02
2011 Dec	284.86	39.48	-76.28	12.66
2012 Jan	294.48	49.71	39.89	-22.67
2012 Feb	261.17	36.38	-144.05	-60.15
2012 Mar	293.13	21.18	138.51	11.45
2012 Apr	264.54	12.19	-123.14	-42.89
2012 May	269.90	15.63	24.08	13.15
2012 Jun	263.15	7.78	-30.41	-43.16
2012 Jul	253.31	-1.12	-45.73	-17.35
2012 Aug	228.82	-15.00	-121.97	-66.04
2012 Sep	300.20	8.78	325.81	52.70
2012 Oct	328.62	5.44	108.53	104.12
2012 Nov	257.50	-15.17	-292.65	47.23
2012 Dec	272.84	-4.22	69.42	-38.23
2013 Jan				
2013 Feb				
2013 Mar				

## 24 Railway goods traffic



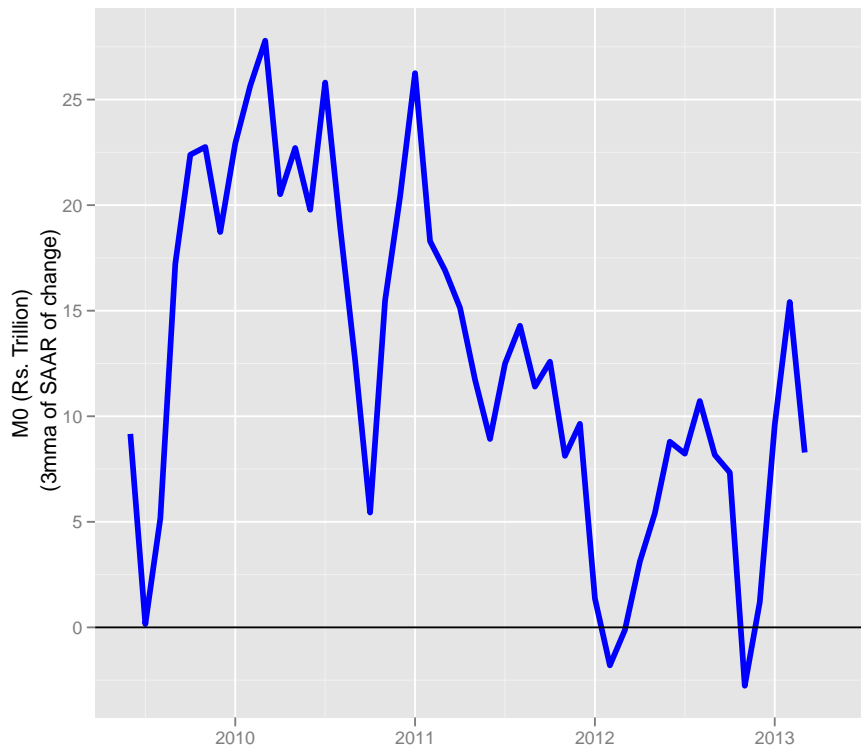
	nsa	sa	yoy	saar	saar.3mma
2011 Jun	76.43	79.20	6.24	-2.18	6.10
2011 Jul	79.66	80.99	7.42	26.75	7.04
2011 Aug	75.75	79.32	2.05	-24.95	-0.12
2011 Sep	70.17	79.74	-1.82	6.25	2.68
2011 Oct	77.68	78.80	-1.31	-14.14	-10.95
2011 Nov	81.08	82.82	5.92	59.73	17.28
2011 Dec	86.81	82.84	8.68	0.19	15.26
2011 Jan	87.03	82.21	5.43	-9.12	16.93
2012 Feb	83.76	85.00	9.06	40.13	10.40
2012 Mar	93.85	82.44	5.64	-36.77	-1.92
2012 Apr	80.25	82.43	3.52	-0.06	1.10
2012 May	84.13	83.66	5.55	17.71	-6.37
2012 Jun	80.43	83.35	5.23	-4.42	4.41
2012 Jul	82.21	83.47	3.20	1.64	4.98
2012 Aug	78.43	82.15	3.54	-19.07	-7.28
2012 Sep	75.93	82.52	8.21	5.34	-4.03
2012 Oct	83.92	85.03	8.03	35.95	7.41
2012 Nov	81.75	83.46	0.83	-22.26	6.34
2012 Dec	88.22	84.18	1.62	10.33	8.01
2013 Jan	92.57	84.84	6.37	9.25	-0.89
2013 Feb	83.60	84.86	-0.19	0.33	6.64
2013 Mar	98.32	86.44	4.76	22.08	10.55
2013 Apr	83.68	85.96	4.27	-6.65	5.25
2013 May					

## 25 Port traffic



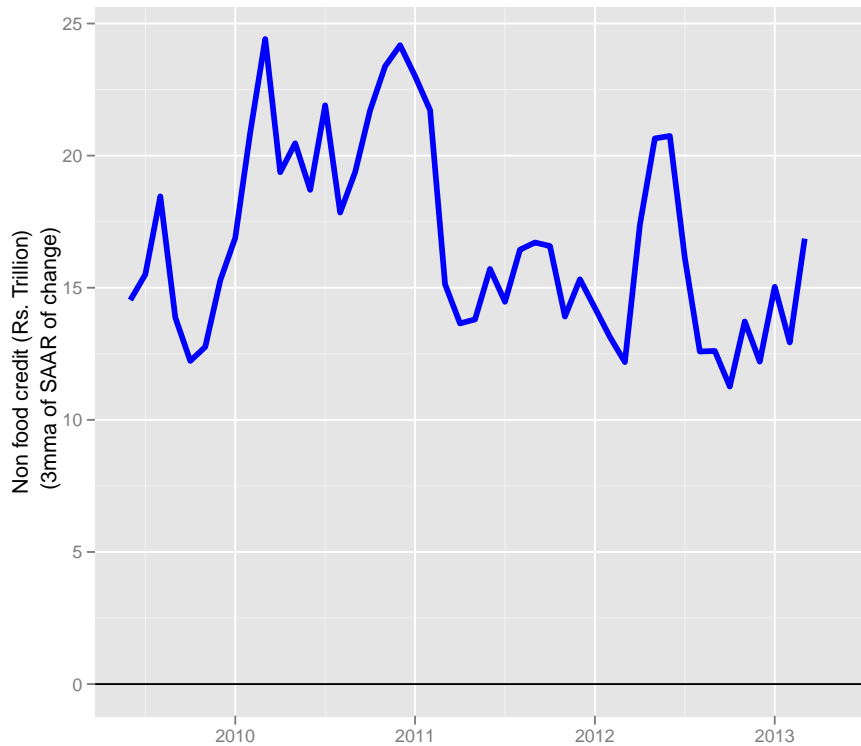
	nsa	sa	yoy	saar	saar.3mma
2011 Jun	46.82	48.39	5.44	1.39	-5.53
2011 Jul	46.45	48.14	3.71	-6.34	-10.04
2011 Aug	44.25	46.21	3.38	-49.11	-18.02
2011 Sep	42.38	45.79	-4.50	-10.81	-22.09
2011 Oct	45.19	46.20	-7.21	10.64	-16.42
2011 Nov	45.68	46.35	-0.51	3.76	1.20
2011 Dec	47.51	45.49	-6.37	-22.26	-2.62
2011 Jan	48.86	45.74	-5.43	6.46	-4.01
2012 Feb	43.70	45.33	-5.88	-10.77	-8.86
2012 Mar	49.15	44.93	-8.48	-10.77	-5.03
2012 Apr	46.38	46.17	-6.41	32.83	3.76
2012 May	47.67	46.29	-4.92	3.13	8.40
2012 Jun	44.46	45.54	-5.03	-19.66	5.43
2012 Jul	45.12	46.76	-2.86	31.69	5.05
2012 Aug	45.31	46.78	2.39	0.63	4.22
2012 Sep	41.50	45.76	-2.08	-26.43	1.96
2012 Oct	45.22	45.84	0.08	2.04	-7.92
2012 Nov	44.15	44.27	-3.34	-41.87	-22.08
2012 Dec					
2013 Jan					
2013 Feb					
2013 Mar					
2013 Apr					
2013 May					

## 26 M0 (Reserve money)



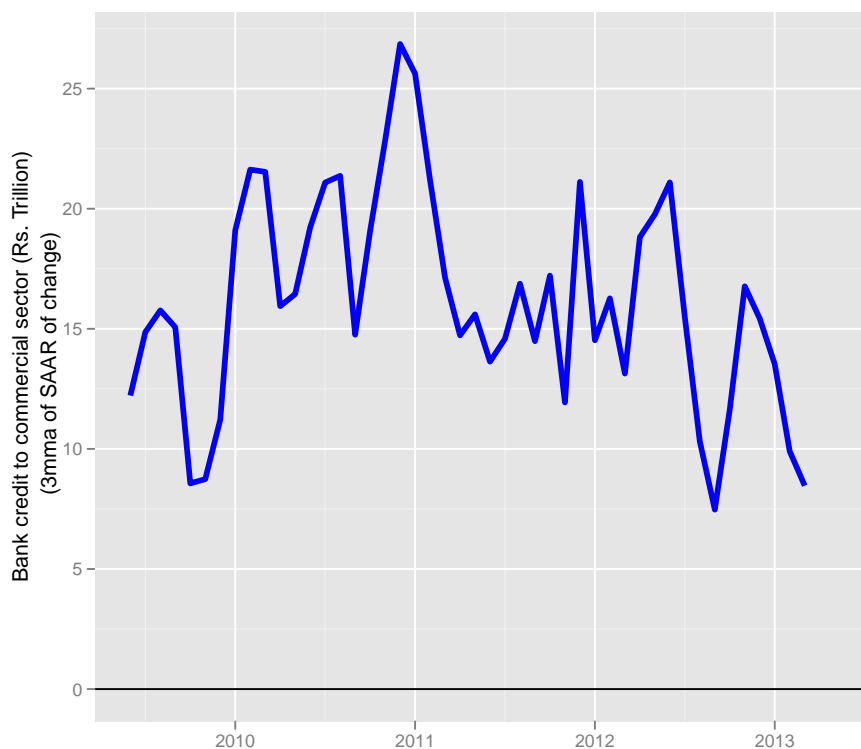
	nsa	sa	yoy	saar	saar.3mma
2011 Jun	13.58	13.41	16.00	5.03	8.92
2011 Jul	13.57	13.64	15.94	20.26	12.49
2011 Aug	13.69	13.84	16.42	17.58	14.29
2011 Sep	13.55	13.80	15.41	-3.62	11.40
2011 Oct	13.89	14.08	18.39	23.80	12.58
2011 Nov	14.02	14.13	13.78	4.19	8.12
2011 Dec	13.94	14.14	12.27	0.93	9.64
2011 Jan	14.30	14.12	14.68	-1.02	1.37
2012 Feb	13.89	14.06	8.55	-5.31	-1.80
2012 Mar	14.26	14.13	3.59	5.95	-0.13
2012 Apr	14.46	14.23	7.41	8.72	3.12
2012 May	14.53	14.25	6.69	1.55	5.41
2012 Jun	14.63	14.45	7.72	16.12	8.80
2012 Jul	14.47	14.53	6.56	7.01	8.23
2012 Aug	14.50	14.64	5.92	9.03	10.72
2012 Sep	14.48	14.74	6.84	8.46	8.17
2012 Oct	14.62	14.80	5.23	4.52	7.34
2012 Nov	14.41	14.54	2.84	-21.27	-2.77
2012 Dec	14.58	14.79	4.57	20.34	1.19
2013 Jan	14.89	15.16	4.12	29.70	9.59
2013 Feb	14.93	15.11	7.51	-3.80	15.41
2013 Mar	15.15	15.10	6.19	-1.05	8.28
2013 Apr					
2013 May					

## 27 Non food credit



	nsa	sa	yoy	saar	saar.3mma
2011 Jun	39.36	39.30	19.27	12.40	15.71
2011 Jul	39.41	39.75	18.40	13.52	14.47
2011 Aug	39.74	40.53	20.18	23.41	16.44
2011 Sep	41.54	40.98	23.08	13.21	16.71
2011 Oct	40.85	41.43	17.51	13.12	16.58
2011 Nov	41.28	41.96	17.62	15.40	13.91
2011 Dec	42.82	42.58	15.76	17.44	15.32
2011 Jan	42.70	42.93	16.13	9.87	14.24
2012 Feb	43.26	43.37	15.43	12.11	13.14
2012 Mar	45.31	43.90	16.83	14.58	12.18
2012 Apr	45.22	44.84	16.82	25.45	17.38
2012 May	45.55	45.66	17.19	21.92	20.65
2012 Jun	46.56	46.23	18.27	14.86	20.74
2012 Jul	46.07	46.68	16.89	11.60	16.13
2012 Aug	46.64	47.12	17.35	11.29	12.59
2012 Sep	47.92	47.71	15.37	14.93	12.61
2012 Oct	47.20	48.01	15.54	7.55	11.26
2012 Nov	48.49	48.77	17.48	18.69	13.72
2012 Dec	49.20	49.19	14.88	10.37	12.20
2013 Jan	49.46	49.85	15.83	16.05	15.04
2013 Feb	50.19	50.37	16.02	12.37	12.93
2013 Mar	52.98	51.31	16.94	22.15	16.86
2013 Apr					
2013 May					

## 28 Bank credit to the commercial sector



	nsa	sa	yoy	saar	saar.3mma
2011 Jun	42.97	42.74	20.66	5.01	13.63
2011 Jul	43.07	43.40	18.62	18.51	14.59
2011 Aug	43.64	44.40	20.90	27.11	16.88
2011 Sep	44.16	44.32	19.86	-2.17	14.49
2011 Oct	44.60	45.31	19.25	26.70	17.21
2011 Nov	45.15	45.74	17.67	11.27	11.93
2011 Dec	46.99	46.72	16.10	25.39	21.12
2011 Jan	46.87	46.99	16.57	6.91	14.52
2012 Feb	47.53	47.64	15.83	16.51	16.27
2012 Mar	49.59	48.28	17.09	15.99	13.14
2012 Apr	49.67	49.25	17.86	23.96	18.82
2012 May	50.10	50.05	17.61	19.35	19.77
2012 Jun	51.25	50.89	19.26	19.98	21.09
2012 Jul	50.65	51.20	17.61	7.12	15.48
2012 Aug	50.82	51.36	16.46	3.84	10.31
2012 Sep	51.27	51.85	16.10	11.46	7.47
2012 Oct	51.76	52.71	16.06	19.64	11.65
2012 Nov	53.24	53.56	17.91	19.21	16.77
2012 Dec	54.11	53.89	15.13	7.42	15.42
2013 Jan	54.36	54.52	15.96	13.96	13.53
2013 Feb	55.10	54.90	15.92	8.32	9.90
2013 Mar	56.51	55.04	13.94	3.13	8.47
2013 Apr					
2013 May					